

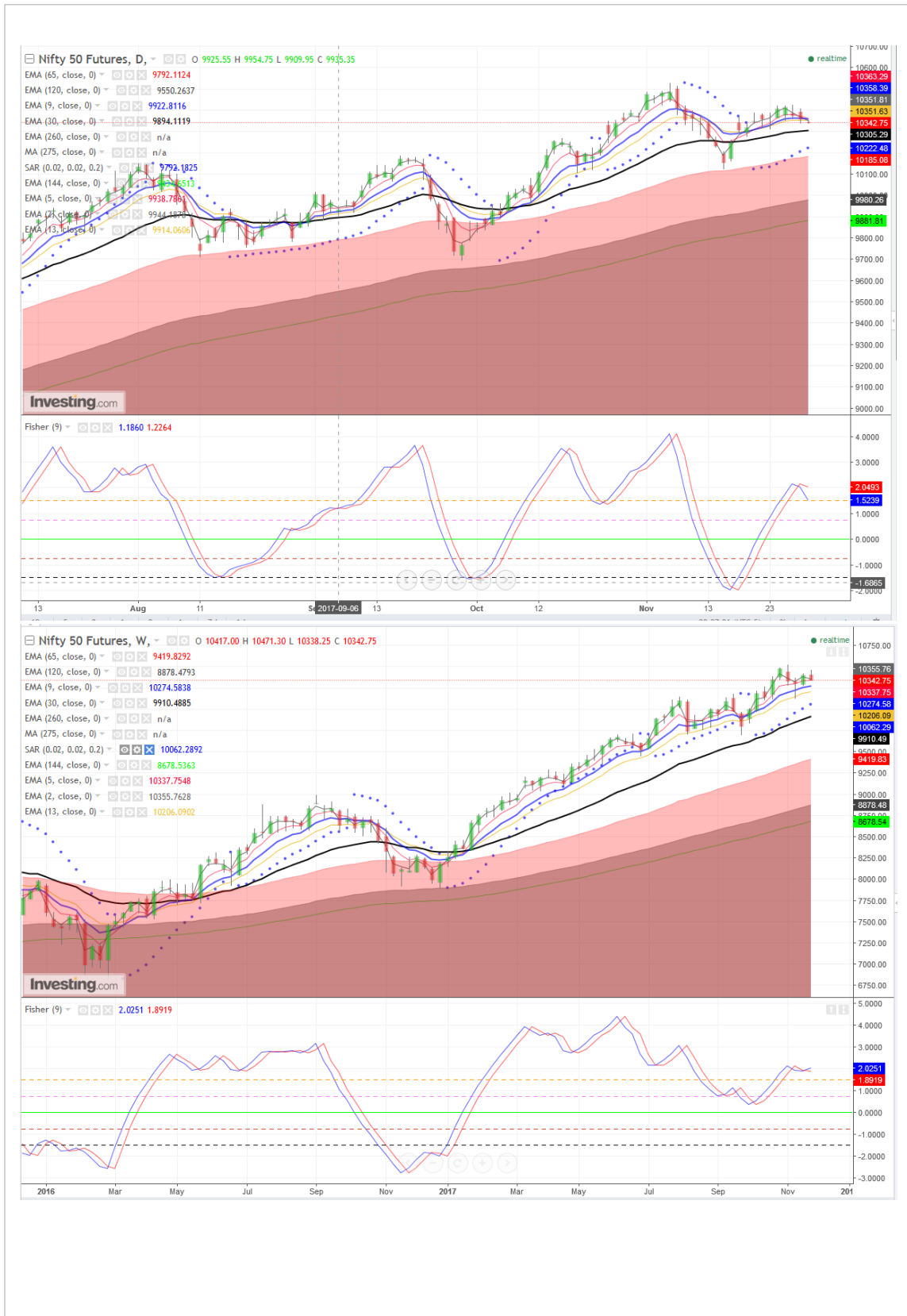
Indian Market

- **SGX NIFTY down 0.11% /11 points at 10342 (at 9:10 IST)**
- The GDP data today could spark off some fresh positive sentiment in the market, as analysts could revisit the corporate earnings if the GDP's declining trend was seen arrested. Still, on weekend, the PMI figures and auto numbers are expected to prove to be further positive drivers.
- **Expect NIFTY to trade cautious ahead of key macro prints.**

Market background

- Asian markets tracked lower on Thursday as oil prices firmed after falling in the last session. Meanwhile, technology stocks in the region declined after U.S. shares in the sector sold off on Wednesday. Investors in the region also digested the better-than-expected official manufacturing PMI data out of China. NIKKEI 225 was flat to positive (+0.07%) but ASX 200 declined by 0.64%. HANG SENG tumbled 1.13%, so as China-A50 by 0.73% and KOSPI 200 by 0.6%. All US key indices futures were trading mild negative (upto -0.07%)
- China's official manufacturing Purchasing Managers' Index came in at 51.8 for November, above the 51.4 forecast by economists in a Reuters survey. The services sector PMI reading came it at 54.8, compared to the 54.3 seen last month.
- Bank of Korea's raised interest rates for the first time in six years. The central bank increased rates to 1.5 percent from 1.25 percent in a move that had been widely expected by markets.
- Tech stocks sold off stateside on Wednesday in US as financials rose. The Dow Jones industrial average closed at a record high as investors focused on momentum in the U.S. economy. The second estimate for third-quarter GDP was revised to 3.3 percent from 3 percent. It was also above the 3.2 percent expected by markets. S&P 500 closed with minor loss (-0.04%) but Nasdaq dipped 1.27% as popular tech names recorded significant declines.
- Yields on U.S. Treasuries moved higher as investors took note of better-than-expected GDP numbers and outgoing Federal Reserve Chair Janet Yellen's remarks on the outlook for the U.S. economy. Yellen also said on Wednesday that she was "very worried" about the U.S. public debt trajectory.
- Oil markets opened cautiously on Thursday ahead of the outcome of an OPEC meeting. One of OPEC's biggest concerns is rising output in the United States. While there has not been an official statement, OPEC and Russia seem set to prolong oil supply cuts. WTI gained 0.21% at \$57.42 per barrel. A Brent crude future was also firm 0.17% at \$62.72 per barrel.

SGX Nifty: Daily and Weekly Chart



Pivot Table: Bank Nifty, Nifty & its constituents Futures (Week: 27 Nov-01 Dec 2017)

| S3 | S2 | S1 | Scrp | CMO 15 | CMO 5 | Lot Size | Wkly Chg | ST Trend | Pivot | R1 | R2 | R3 |
|---------|---------|---------|------------|-----------|--------|----------|----------|-------------|---------|---------|---------|---------|
| 10318.0 | 10342.1 | 10375.7 | NIFTY | 36.4 | 42.5 | 75 | 100.5 | +ve | 10399.9 | 10433.5 | 10457.6 | 10491.2 |
| 25664.2 | 25717.1 | 25779.8 | BANKNIFTY | 32.5 | 84.4 | 40 | 23.7 | +ve | 25832.7 | 25895.4 | 25948.3 | 26011.0 |
| 398.1 | 400.6 | 403.1 | ADANIPTS | 10.6 | 4.2 | 2500 | 3.0 | -ve | 405.5 | 408.0 | 410.5 | 413.0 |
| 261.2 | 263.2 | 264.5 | AMBUJACEM | 1.2 | -24.4 | 2500 | -9.4 | -ve | 266.5 | 267.8 | 269.8 | 271.1 |
| 1142.4 | 1147.4 | 1155.4 | ASIANPAINT | 5.1 | -35.3 | 600 | -12.1 | -ve | 1160.3 | 1168.3 | 1173.3 | 1181.3 |
| 680.2 | 688.1 | 702.2 | AUROPHARMA | 2.6 | -30.7 | 800 | 7.5 | +ve | 710.1 | 724.2 | 732.1 | 746.2 |
| 535.3 | 538.6 | 542.4 | AXISBANK | 20.8 | 93.4 | 1200 | 1.8 | -ve | 545.6 | 549.4 | 552.7 | 556.5 |
| 3245.4 | 3268.9 | 3283.9 | BAJAJ-AUTO | 55.4 | 26.7 | 250 | 77.3 | +ve | 3307.5 | 3322.5 | 3346.0 | 3361.0 |
| 1739.8 | 1753.6 | 1771.9 | BAJFINANCE | 13.6 | -33.0 | 500 | -5.2 | +ve | 1785.7 | 1803.9 | 1817.7 | 1836.0 |
| 489.0 | 492.5 | 495.3 | BHARTIARTL | 29.4 | 19.3 | 1700 | 2.7 | +ve | 498.8 | 501.6 | 505.1 | 507.9 |
| 18615.3 | 18715.1 | 18864.8 | BOSCHLTD | -52.5 | -100.0 | 25 | -38.8 | -ve | 18964.6 | 19114.3 | 19214.1 | 19363.8 |
| 496.7 | 499.6 | 504.6 | BPL | 10.4 | 3.1 | 1800 | 5.4 | +ve | 507.4 | 512.4 | 515.3 | 520.3 |
| 602.0 | 608.0 | 612.0 | CIPLA | 38.4 | 9.3 | 1000 | 5.9 | +ve | 618.0 | 622.0 | 628.0 | 632.0 |
| 265.4 | 267.2 | 269.3 | COALINDIA | 37.2 | -78.2 | 1700 | -0.9 | -ve | 271.1 | 273.2 | 275.0 | 277.1 |
| 2191.1 | 2240.6 | 2270.1 | DRREDDY | 27.9 | -42.0 | 200 | -31.9 | -ve | 2319.6 | 2349.1 | 2398.6 | 2428.1 |
| 30105.3 | 30352.4 | 30595.8 | EICHERMOT | 14.1 | -33.5 | 25 | 55.7 | +ve | 30842.9 | 31086.4 | 31333.5 | 31576.9 |
| 455.1 | 458.4 | 464.1 | GAIL | 52.4 | 45.2 | 2000 | 24.4 | +ve | 467.4 | 473.1 | 476.4 | 482.1 |
| 846.8 | 851.4 | 855.2 | HCLTECH | -6.3 | -48.6 | 700 | 15.0 | -ve | 859.9 | 863.7 | 868.3 | 872.1 |
| 1687.5 | 1694.3 | 1704.4 | HDFC | 4.1 | -17.7 | 500 | 3.9 | +ve | 1711.1 | 1721.2 | 1728.0 | 1738.1 |
| 1825.6 | 1833.8 | 1845.6 | HDFCBANK | 31.9 | 12.2 | 500 | 25.1 | +ve | 1853.8 | 1865.6 | 1873.8 | 1885.6 |
| 3566.1 | 3596.2 | 3628.9 | HEROMOTOCO | -15.8 | -21.7 | 200 | 14.8 | +ve | 3659.0 | 3691.7 | 3721.8 | 3754.5 |
| 245.6 | 248.6 | 250.5 | HINDALCO | 27.5 | -100.0 | 3500 | -7.7 | -ve | 253.5 | 255.4 | 258.4 | 260.3 |
| 409.9 | 415.5 | 423.3 | HINDPETRO | 0.4 | -50.5 | 1575 | 14.3 | +ve | 428.9 | 436.7 | 442.3 | 450.1 |
| 1242.5 | 1249.8 | 1259.8 | HINDUNILVR | 29.6 | 11.8 | 600 | -10.7 | -ve | 1267.1 | 1277.1 | 1284.4 | 1294.4 |
| 1136.4 | 1147.2 | 1160.4 | IBULHSGFIN | 3.3 | -99.8 | 400 | -14.2 | -ve | 1171.2 | 1184.4 | 1195.2 | 1208.4 |
| 311.5 | 314.1 | 316.1 | ICICIBANK | 22.7 | 78.7 | 2750 | -8.2 | -ve | 318.8 | 320.8 | 323.4 | 325.4 |
| 1621.1 | 1634.8 | 1653.5 | INDUSINDBK | 9.0 | -11.6 | 300 | 38.6 | +ve | 1667.1 | 1685.8 | 1699.5 | 1718.2 |
| 372.2 | 374.6 | 378.2 | INFRATEL | -1.2 | -80.2 | 1700 | 0.1 | -ve | 380.6 | 384.2 | 386.6 | 390.2 |
| 966.1 | 978.8 | 993.8 | INFY | 7.3 | 100.0 | 500 | 36.7 | +ve | 1006.5 | 1021.6 | 1034.3 | 1049.3 |
| 388.1 | 390.4 | 393.3 | IOC | -12.3 | -54.0 | 1500 | 0.3 | +ve | 395.6 | 398.5 | 400.8 | 403.7 |
| 255.2 | 256.7 | 258.8 | ITC | -17.6 | -59.9 | 2400 | 2.6 | +ve | 260.2 | 262.3 | 263.8 | 265.9 |
| 1007.4 | 1014.7 | 1024.3 | KOTAKBANK | 13.6 | -35.9 | 800 | 8.3 | +ve | 1031.6 | 1041.1 | 1048.4 | 1058.0 |
| 1204.1 | 1209.7 | 1214.2 | LT | 23.9 | 45.6 | 750 | -6.7 | -ve | 1219.8 | 1224.3 | 1229.9 | 1234.4 |
| 821.3 | 825.7 | 828.5 | LUPIN | -22.3 | -69.9 | 400 | -2.0 | +ve | 832.9 | 835.7 | 840.1 | 842.9 |
| 1404.5 | 1413.0 | 1424.3 | M&M | 19.9 | 37.6 | 500 | 13.1 | +ve | 1432.9 | 1444.2 | 1452.7 | 1464.0 |
| 8415.6 | 8448.8 | 8480.3 | MARUTI | 56.1 | 90.0 | 75 | 161.6 | +ve | 8513.4 | 8544.9 | 8578.1 | 8609.6 |
| 177.4 | 178.4 | 179.6 | NTPC | 26.2 | 33.1 | 4000 | 3.3 | +ve | 180.6 | 181.9 | 182.9 | 184.1 |
| 179.2 | 180.0 | 180.7 | ONGC | 33.2 | 24.6 | 3750 | 3.1 | -ve | 181.6 | 182.3 | 183.1 | 183.8 |
| 205.3 | 206.6 | 208.8 | POWERGRID | -21.1 | 4.1 | 4000 | 2.3 | +ve | 210.2 | 212.4 | 213.7 | 215.9 |
| 936.1 | 941.9 | 947.2 | RELIANCE | 40.8 | 26.0 | 1000 | 39.5 | +ve | 953.0 | 958.3 | 964.1 | 969.4 |
| 326.1 | 329.3 | 331.3 | SBIN | 34.9 | 89.5 | 3000 | -5.4 | -ve | 334.5 | 336.5 | 339.7 | 341.7 |
| 520.2 | 526.9 | 538.5 | SUNPHARMA | 41.1 | 17.0 | 800 | 31.0 | +ve | 545.3 | 556.9 | 563.6 | 575.2 |
| 417.1 | 421.1 | 423.5 | TATAMOTORS | 33.3 | -1.2 | 1500 | 2.5 | +ve | 427.5 | 429.9 | 433.9 | 436.3 |
| 694.4 | 699.1 | 703.8 | TATASTEEL | 46.6 | 3.2 | 1000 | 6.9 | +ve | 708.5 | 713.2 | 717.9 | 722.6 |
| 2650.3 | 2665.2 | 2681.0 | TCS | 39.5 | 71.0 | 250 | -23.1 | -ve | 2695.9 | 2711.7 | 2726.6 | 2742.4 |
| 481.8 | 486.3 | 490.8 | TECHM | 53.3 | 46.9 | 1100 | 8.4 | +ve | 495.2 | 499.7 | 504.2 | 508.7 |
| 4147.0 | 4169.1 | 4204.9 | ULTRACEMCO | 18.4 | 27.6 | 200 | -40.8 | -ve | 4227.0 | 4262.8 | 4284.9 | 4320.7 |
| 299.2 | 302.2 | 304.5 | VEDL | 18.3 | -44.4 | 1750 | -1.4 | -ve | 307.5 | 309.8 | 312.8 | 315.1 |
| 289.0 | 290.1 | 291.6 | WIPRO | 3.3 | 2.9 | 2400 | -2.2 | -ve | 292.7 | 294.2 | 295.3 | 296.8 |
| 307.8 | 310.2 | 311.6 | YESBANK | -20.6 | -46.5 | 1750 | 5.7 | +ve | 314.0 | 315.4 | 317.8 | 319.2 |
| 728.2 | 735.8 | 740.7 | UPL | -20.4 | -26.7 | 1200 | 19.1 | +ve | 748.4 | 753.3 | 760.9 | 765.8 |
| 544.3 | 550.8 | 558.1 | ZEEL | 31.9 | 81.8 | 1300 | 28.5 | +ve | 564.6 | 571.9 | 578.4 | 585.7 |

Contact Person Detail

SURYA NARAYAN NAYAK
HEAD - Research & Sales
Email - surya.nayak@kcsecurities.com
Contact No - +9122 - 67236089

Kantilal Chhaganlal Securities Pvt Ltd
Wilco Center, 'A' Wing, Near Garware House, 8,
Subhash Road, Ville Parle (E), Mumbai 400 057 Tel
No: +91 022-6723 6000/6001 Fax: +91 22 6723 6088

Disclaimer

This is solely for information of clients of Kantilal Chhaganlal Securities and does not construe to be an investment advice. It is also not intended as an offer or solicitation for the purchase and sale of any financial instruments. Any action taken by you on the basis of the information contained herein is your responsibility alone and Kantilal Chhaganlal Securities its subsidiaries or its employees or associates will not be liable in any manner for the consequences of such action taken by you. We have exercised due diligence in checking the correctness and authenticity of the information contained in this recommendation, but Kantilal Chhaganlal Securities or any of its subsidiaries or associates or employees shall not be in any way responsible for any loss or damage that may arise to any person from any inadvertent error in the information contained in this recommendation or any action taken on basis of this information. Technical analysis studies market psychology, price patterns and volume levels. It is used to forecast future price and market movements. Technical analysis is complementary to fundamental analysis and news sources. The recommendations issued herewith might be contrary to recommendations issued by Kantilal Chhaganlal Securities in the company research undertaken as the recommendations stated in this report is derived purely from technical analysis. Kantilal Chhaganlal Securities has based this document on information obtained from sources it believes to be reliable but which it has not independently verified; Kantilal Chhaganlal Securities makes no guarantee, representation or warranty and accepts no responsibility or liability as to its accuracy or completeness. The opinions contained within the report are based upon publicly available information at the time of publication and are subject to change without notice. The information and any disclosures provided herein are in summary form and have been prepared for informational purposes. The recommendations and suggested price levels are intended purely for trading purposes. The recommendations are valid for the day of the report however trading trends and volumes might vary substantially on an intraday basis and the recommendations may be subject to change. The information and any disclosures provided herein may be considered confidential. Any use, distribution, modification, copying, forwarding or disclosure by any person is strictly prohibited. The information and any disclosures provided herein do not constitute a solicitation or offer to purchase or sell any security or other financial product or instrument. The current performance may be unaudited. Past performance does not guarantee future returns. There can be no assurance that investments will achieve any targeted rates of return, and there is no guarantee against the loss of your entire investment. **POTENTIAL CONFLICT OF INTEREST DISCLOSURE** (as on date of report) Disclosure of interest statement – Analyst interest of the stock /Instrument(s): - No. Firm interest of the stock / Instrument (s): - No.