

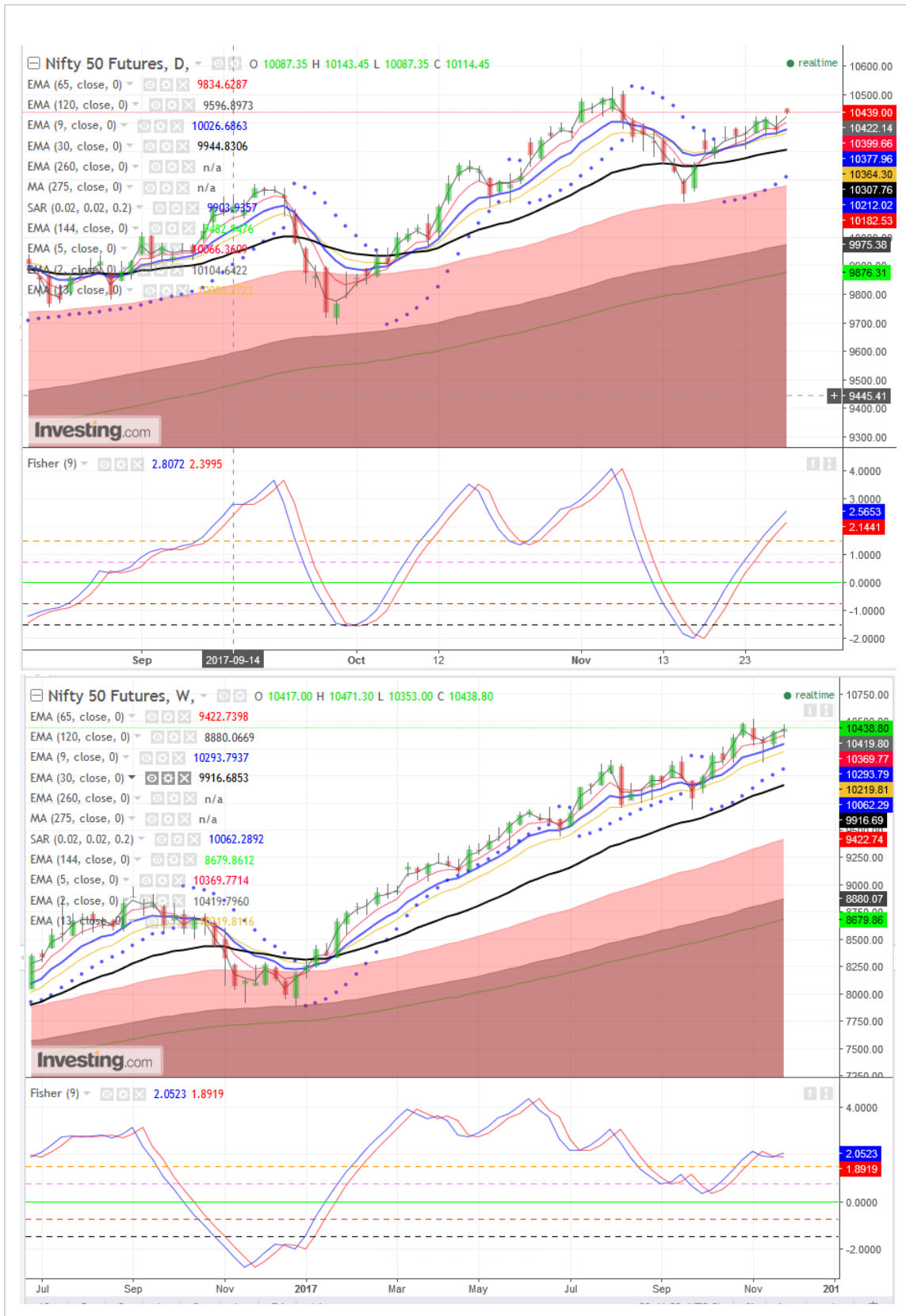
Indian Market

- **SGX NIFTY up 0.67% /70 points at 10443 (at 9:10 IST)**
- Indian market is expected to shrug off the North Korea Ballistic Missile Test fear, as economic outlook is set to improve a Reuter poll of economist suggest. The GDP data of prior quarter set to be released tomorrow is seen to arrest the downward trajectory.
- **Expect NIFTY to trade higher.**

Market background

- Asian markets traded mixed on Wednesday, but mostly shrugged off North Korea's latest missile launch. North Korea on Wednesday local time launched a likely intercontinental ballistic missile that landed in the Sea of Japan, according to the Pentagon. The launch, the North's first since Sept. 15, came after the U.S. classified North Korea as a country that supported terrorism on Nov. 20. Despite that, most markets in Asia traded higher, following the strong lead from U.S. stocks on tax reform progress and following Federal Reserve Chair nominee Jerome Powell's Senate testimony. The dollar was firmer against the Yen, as Japanese exporters gained. NIKKEI 225 was gaining 0.37% so as ASX 200 by 0.58%. But HANG SENG was seen sliding by 0.25%, so as China-A50 by 0.75%. KOSPI 200 was trading flat All US key indices futures were trading mild negative (upto -0.06%)
- Wall Street closed on upbeat mode with the S&P 500 and Dow Jones rallied ~1% while Nasdaq gained 0.5%.
- Oil prices came under pressure ahead of a Thursday meeting of major oil producers. U.S. West Texas Intermediate shed 0.52 percent to trade at \$57.69 per barrel. Brent crude futures declined 0.58 percent to settle at \$63.24 per barrel.

SGX Nifty: Daily and Weekly Chart



Pivot Table: Bank Nifty, Nifty & its constituents Futures (Week: 27 Nov-01 Dec 2017)

S3	S2	S1	Scrp	CMO 15	CMO 5	Lot Size	Wkly Chg	ST Trend	Pivot	R1	R2	R3
10318.0	10342.1	10375.7	NIFTY	36.4	42.5	75	100.5	+ve	10399.9	10433.5	10457.6	10491.2
25664.2	25717.1	25779.8	BANKNIFTY	32.5	84.4	40	23.7	+ve	25832.7	25895.4	25948.3	26011.0
398.1	400.6	403.1	ADANIPTS	10.6	4.2	2500	3.0	-ve	405.5	408.0	410.5	413.0
261.2	263.2	264.5	AMBUJACEM	1.2	-24.4	2500	-9.4	-ve	266.5	267.8	269.8	271.1
1142.4	1147.4	1155.4	ASIANPAINT	5.1	-35.3	600	-12.1	-ve	1160.3	1168.3	1173.3	1181.3
680.2	688.1	702.2	AUROPHARMA	2.6	-30.7	800	7.5	+ve	710.1	724.2	732.1	746.2
535.3	538.6	542.4	AXISBANK	20.8	93.4	1200	1.8	-ve	545.6	549.4	552.7	556.5
3245.4	3268.9	3283.9	BAJAJ-AUTO	55.4	26.7	250	77.3	+ve	3307.5	3322.5	3346.0	3361.0
1739.8	1753.6	1771.9	BAJFINANCE	13.6	-33.0	500	-5.2	+ve	1785.7	1803.9	1817.7	1836.0
489.0	492.5	495.3	BHARTIARTL	29.4	19.3	1700	2.7	+ve	498.8	501.6	505.1	507.9
18615.3	18715.1	18864.8	BOSCHLTD	-52.5	-100.0	25	-38.8	-ve	18964.6	19114.3	19214.1	19363.8
496.7	499.6	504.6	BPL	10.4	3.1	1800	5.4	+ve	507.4	512.4	515.3	520.3
602.0	608.0	612.0	CIPLA	38.4	9.3	1000	5.9	+ve	618.0	622.0	628.0	632.0
265.4	267.2	269.3	COALINDIA	37.2	-78.2	1700	-0.9	-ve	271.1	273.2	275.0	277.1
2191.1	2240.6	2270.1	DRREDDY	27.9	-42.0	200	-31.9	-ve	2319.6	2349.1	2398.6	2428.1
30105.3	30352.4	30595.8	EICHERMOT	14.1	-33.5	25	55.7	+ve	30842.9	31086.4	31333.5	31576.9
455.1	458.4	464.1	GAIL	52.4	45.2	2000	24.4	+ve	467.4	473.1	476.4	482.1
846.8	851.4	855.2	HCLTECH	-6.3	-48.6	700	15.0	-ve	859.9	863.7	868.3	872.1
1687.5	1694.3	1704.4	HDFC	4.1	-17.7	500	3.9	+ve	1711.1	1721.2	1728.0	1738.1
1825.6	1833.8	1845.6	HDFCBANK	31.9	12.2	500	25.1	+ve	1853.8	1865.6	1873.8	1885.6
3566.1	3596.2	3628.9	HEROMOTOCO	-15.8	-21.7	200	14.8	+ve	3659.0	3691.7	3721.8	3754.5
245.6	248.6	250.5	HINDALCO	27.5	-100.0	3500	-7.7	-ve	253.5	255.4	258.4	260.3
409.9	415.5	423.3	HINDPETRO	0.4	-50.5	1575	14.3	+ve	428.9	436.7	442.3	450.1
1242.5	1249.8	1259.8	HINDUNILVR	29.6	11.8	600	-10.7	-ve	1267.1	1277.1	1284.4	1294.4
1136.4	1147.2	1160.4	IBULHSGFIN	3.3	-99.8	400	-14.2	-ve	1171.2	1184.4	1195.2	1208.4
311.5	314.1	316.1	ICICIBANK	22.7	78.7	2750	-8.2	-ve	318.8	320.8	323.4	325.4
1621.1	1634.8	1653.5	INDUSINDBK	9.0	-11.6	300	38.6	+ve	1667.1	1685.8	1699.5	1718.2
372.2	374.6	378.2	INFRATEL	-1.2	-80.2	1700	0.1	-ve	380.6	384.2	386.6	390.2
966.1	978.8	993.8	INFY	7.3	100.0	500	36.7	+ve	1006.5	1021.6	1034.3	1049.3
388.1	390.4	393.3	IOC	-12.3	-54.0	1500	0.3	+ve	395.6	398.5	400.8	403.7
255.2	256.7	258.8	ITC	-17.6	-59.9	2400	2.6	+ve	260.2	262.3	263.8	265.9
1007.4	1014.7	1024.3	KOTAKBANK	13.6	-35.9	800	8.3	+ve	1031.6	1041.1	1048.4	1058.0
1204.1	1209.7	1214.2	LT	23.9	45.6	750	-6.7	-ve	1219.8	1224.3	1229.9	1234.4
821.3	825.7	828.5	LUPIN	-22.3	-69.9	400	-2.0	+ve	832.9	835.7	840.1	842.9
1404.5	1413.0	1424.3	M&M	19.9	37.6	500	13.1	+ve	1432.9	1444.2	1452.7	1464.0
8415.6	8448.8	8480.3	MARUTI	56.1	90.0	75	161.6	+ve	8513.4	8544.9	8578.1	8609.6
177.4	178.4	179.6	NTPC	26.2	33.1	4000	3.3	+ve	180.6	181.9	182.9	184.1
179.2	180.0	180.7	ONGC	33.2	24.6	3750	3.1	-ve	181.6	182.3	183.1	183.8
205.3	206.6	208.8	POWERGRID	-21.1	4.1	4000	2.3	+ve	210.2	212.4	213.7	215.9
936.1	941.9	947.2	RELIANCE	40.8	26.0	1000	39.5	+ve	953.0	958.3	964.1	969.4
326.1	329.3	331.3	SBIN	34.9	89.5	3000	-5.4	-ve	334.5	336.5	339.7	341.7
520.2	526.9	538.5	SUNPHARMA	41.1	17.0	800	31.0	+ve	545.3	556.9	563.6	575.2
417.1	421.1	423.5	TATAMOTORS	33.3	-1.2	1500	2.5	+ve	427.5	429.9	433.9	436.3
694.4	699.1	703.8	TATASTEEL	46.6	3.2	1000	6.9	+ve	708.5	713.2	717.9	722.6
2650.3	2665.2	2681.0	TCS	39.5	71.0	250	-23.1	-ve	2695.9	2711.7	2726.6	2742.4
481.8	486.3	490.8	TECHM	53.3	46.9	1100	8.4	+ve	495.2	499.7	504.2	508.7
4147.0	4169.1	4204.9	ULTRACEMCO	18.4	27.6	200	-40.8	-ve	4227.0	4262.8	4284.9	4320.7
299.2	302.2	304.5	VEDL	18.3	-44.4	1750	-1.4	-ve	307.5	309.8	312.8	315.1
289.0	290.1	291.6	WIPRO	3.3	2.9	2400	-2.2	-ve	292.7	294.2	295.3	296.8
307.8	310.2	311.6	YESBANK	-20.6	-46.5	1750	5.7	+ve	314.0	315.4	317.8	319.2
728.2	735.8	740.7	UPL	-20.4	-26.7	1200	19.1	+ve	748.4	753.3	760.9	765.8
544.3	550.8	558.1	ZEEL	31.9	81.8	1300	28.5	+ve	564.6	571.9	578.4	585.7



Contact Person Detail

SURYA NARAYAN NAYAK

HEAD - Research & Sales

Email - surya.nayak@kcsecurities.com

Contact No - +9122 - 67236089

Kantilal Chhaganlal Securities Pvt Ltd

Vilco Center, 'A' Wing, Near Garware House, 8,
Subhash Road, Ville Parle (E), Mumbai 400 057 Tel
No: +91 022-6723 6000/6001 Fax: +91 22 6723 6088

Disclaimer

This is solely for information of clients of Kantilal Chhaganlal Securities and does not construe to be an investment advice. It is also not intended as an offer or solicitation for the purchase and sale of any financial instruments. Any action taken by you on the basis of the information contained herein is your responsibility alone and Kantilal Chhaganlal Securities its subsidiaries or its employees or associates will not be liable in any manner for the consequences of such action taken by you. We have exercised due diligence in checking the correctness and authenticity of the information contained in this recommendation, but Kantilal Chhaganlal Securities or any of its subsidiaries or associates or employees shall not be in any way responsible for any loss or damage that may arise to any person from any inadvertent error in the information contained in this recommendation or any action taken on basis of this information. Technical analysis studies market psychology, price patterns and volume levels. It is used to forecast future price and market movements. Technical analysis is complementary to fundamental analysis and news sources. The recommendations issued herewith might be contrary to recommendations issued by Kantilal Chhaganlal Securities in the company research undertaken as the recommendations stated in this report is derived purely from technical analysis. Kantilal Chhaganlal Securities has based this document on information obtained from sources it believes to be reliable but which it has not independently verified; Kantilal Chhaganlal Securities makes no guarantee, representation or warranty and accepts no responsibility or liability as to its accuracy or completeness. The opinions contained within the report are based upon publicly available information at the time of publication and are subject to change without notice. The information and any disclosures provided herein are in summary form and have been prepared for informational purposes. The recommendations and suggested price levels are intended purely for trading purposes. The recommendations are valid for the day of the report however trading trends and volumes might vary substantially on an intraday basis and the recommendations may be subject to change. The information and any disclosures provided herein may be considered confidential. Any use, distribution, modification, copying, forwarding or disclosure by any person is strictly prohibited. The information and any disclosures provided herein do not constitute a solicitation or offer to purchase or sell any security or other financial product or instrument. The current performance may be unaudited. Past performance does not guarantee future returns. There can be no assurance that investments will achieve any targeted rates of return, and there is no guarantee against the loss of your entire investment. **POTENTIAL CONFLICT OF INTEREST DISCLOSURE (as on date of report)** Disclosure of interest statement – Analyst interest of the stock /Instrument(s): - No. Firm interest of the stock / Instrument (s): - No.