

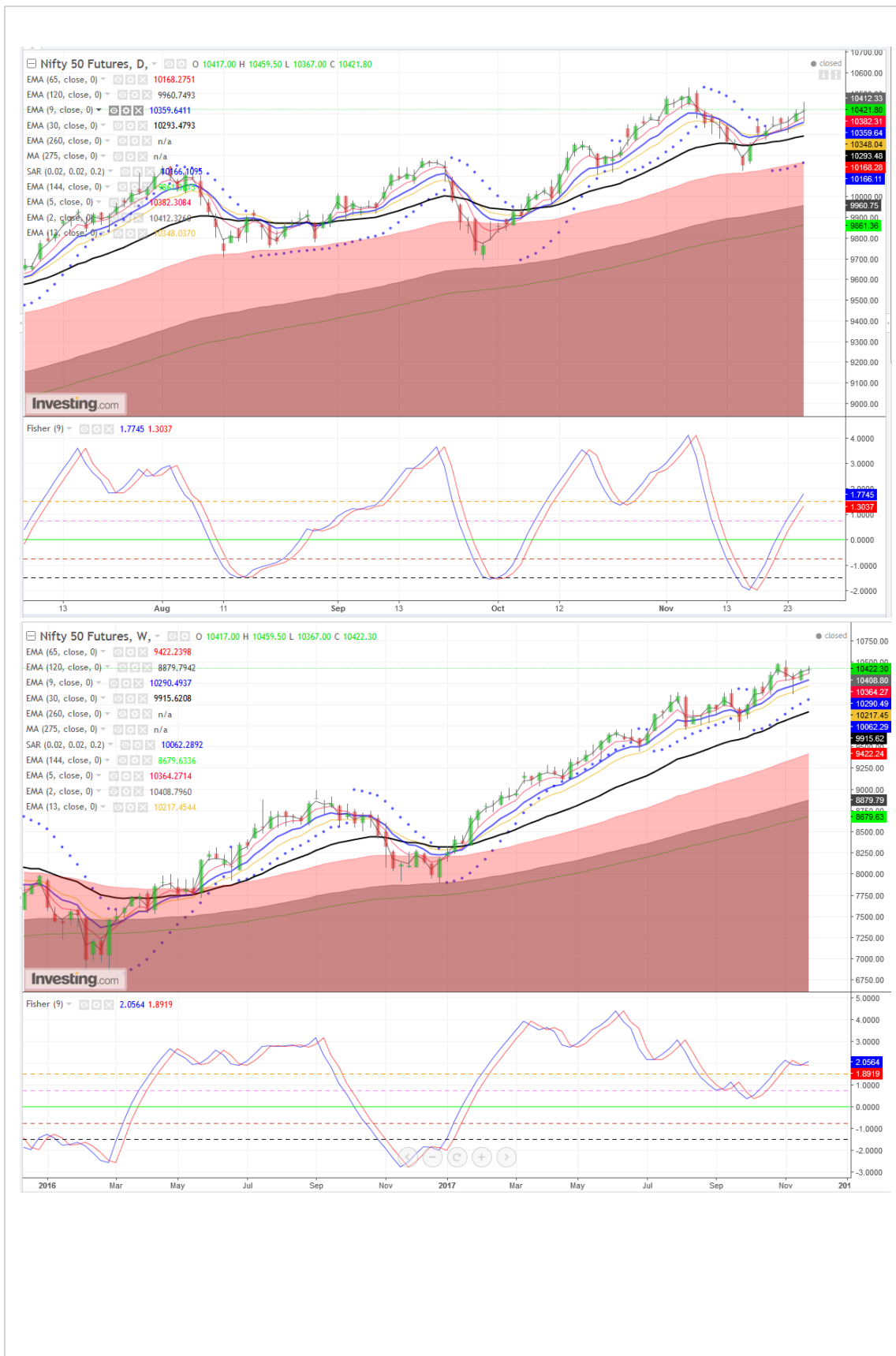
Indian Market

- **SGX NIFTY down 0.37% /38 points at 10379 (at 9:10 IST)**
- S&P's view on India to retain its earlier rating post market hours Friday, would act as a sentiment dampener. Weak Asian cues, especially battered China market
- **Expect NIFTY to trade bit weaker tracking global equity markets, so as oil. Oil's hardening stand would tamper long term positive trend.**

Market background

- Asian indexes edged down on Monday despite the firmer lead from Wall Street last week. Chinese markets traded lower as investors kept an eye on developments in the bond market while South Korea's Kospi slid on weakness in tech names. NIKKEI 225 was sliding 0.27% so as HANG SENG by 0.45%. But CHINA A50 nosedived 1.81% while KOSPI 200 similar fashion tumbled 1.38%, but ASX 200 was flat. All US key indices futures were trading flat to negative (upto - 0.1%)
- Greater China equities edged down in early trade as markets continued to focus on climbing bond yields. Debt pile at Chinese firms has been climbing in that time, with levels at the end of September growing at the fastest pace in four years. The build-up has continued even as policymakers roll out a series of measures to end the explosive growth of debt, including persuading state firms and local governments to prune borrowing and tighter rules and monitoring of banks' short-term borrowing. By some estimates, China's overall debt is now as much as three times the size of its economy.
- Profits at China's industrial firms continued to grow at a robust pace last month despite a slight cooling from a sizzling September as companies benefit from strong commodities prices, with mining and heavy industry contributing the biggest gains.
- Black Friday and Thanksgiving online sales in the United States surged to record highs as shoppers bagged deep discounts and bought more on their mobile devices, heralding a promising start to the key holiday season, according to retail analytics firms
- A lack of investment in oil projects will likely come back to bite the energy market, the CEO of one of the world's largest sovereign wealth funds (Mubadala CEO Khaldoon Al Mubarak) told CNBC. Brent climbed 0.57% at \$63.83/bbl, while U.S. crude down 0.44% at \$58.69/bbl
-

SGX Nifty: Daily and Weekly Chart



Pivot Table: Bank Nifty, Nifty & its constituents Futures (Week: 27 Nov-01 Dec 2017)

S3	S2	S1	Scrip	CMO 15	CMO 5	Lot Size	Wkly Chg	ST Trend	Pivot	R1	R2	R3
10318.0	10342.1	10375.7	NIFTY	36.4	42.5	75	100.5	+ve	10399.9	10433.5	10457.6	10491.2
25664.2	25717.1	25779.8	BANKNIFTY	32.5	84.4	40	23.7	+ve	25832.7	25895.4	25948.3	26011.0
398.1	400.6	403.1	ADANIPTS	10.6	4.2	2500	3.0	-ve	405.5	408.0	410.5	413.0
261.2	263.2	264.5	AMBUJACEM	1.2	-24.4	2500	-9.4	-ve	266.5	267.8	269.8	271.1
1142.4	1147.4	1155.4	ASIANPAINT	5.1	-35.3	600	-12.1	-ve	1160.3	1168.3	1173.3	1181.3
680.2	688.1	702.2	AUROPHARMA	2.6	-30.7	800	7.5	+ve	710.1	724.2	732.1	746.2
535.3	538.6	542.4	AXISBANK	20.8	93.4	1200	1.8	-ve	545.6	549.4	552.7	556.5
3245.4	3268.9	3283.9	BAJAJ-AUTO	55.4	26.7	250	77.3	+ve	3307.5	3322.5	3346.0	3361.0
1739.8	1753.6	1771.9	BAJFINANCE	13.6	-33.0	500	-5.2	+ve	1785.7	1803.9	1817.7	1836.0
489.0	492.5	495.3	BHARTIARTL	29.4	19.3	1700	2.7	+ve	498.8	501.6	505.1	507.9
18615.3	18715.1	18864.8	BOSCHLTD	-52.5	-100.0	25	-38.8	-ve	18964.6	19114.3	19214.1	19363.8
496.7	499.6	504.6	BPCL	10.4	3.1	1800	5.4	+ve	507.4	512.4	515.3	520.3
602.0	608.0	612.0	CIPLA	38.4	9.3	1000	5.9	+ve	618.0	622.0	628.0	632.0
265.4	267.2	269.3	COALINDIA	37.2	-78.2	1700	-0.9	-ve	271.1	273.2	275.0	277.1
2191.1	2240.6	2270.1	DRREDDY	27.9	-42.0	200	-31.9	-ve	2319.6	2349.1	2398.6	2428.1
30105.3	30352.4	30595.8	EICHERMOT	14.1	-33.5	25	55.7	+ve	30842.9	31086.4	31333.5	31576.9
455.1	458.4	464.1	GAIL	52.4	45.2	2000	24.4	+ve	467.4	473.1	476.4	482.1
846.8	851.4	855.2	HCLTECH	-6.3	-48.6	700	15.0	-ve	859.9	863.7	868.3	872.1
1687.5	1694.3	1704.4	HDFC	4.1	-17.7	500	3.9	+ve	1711.1	1721.2	1728.0	1738.1
1825.6	1833.8	1845.6	HDFCBANK	31.9	12.2	500	25.1	+ve	1853.8	1865.6	1873.8	1885.6
3566.1	3596.2	3628.9	HEROMOTOCO	-15.8	-21.7	200	14.8	+ve	3659.0	3691.7	3721.8	3754.5
245.6	248.6	250.5	HINDALCO	27.5	-100.0	3500	-7.7	-ve	253.5	255.4	258.4	260.3
409.9	415.5	423.3	HINDPETRO	0.4	-50.5	1575	14.3	+ve	428.9	436.7	442.3	450.1
1242.5	1249.8	1259.8	HINDUNILVR	29.6	11.8	600	-10.7	-ve	1267.1	1277.1	1284.4	1294.4
1136.4	1147.2	1160.4	IBULHSGFIN	3.3	-99.8	400	-14.2	-ve	1171.2	1184.4	1195.2	1208.4
311.5	314.1	316.1	ICICIBANK	22.7	78.7	2750	-8.2	-ve	318.8	320.8	323.4	325.4
1621.1	1634.8	1653.5	INDUSINDBK	9.0	-11.6	300	38.6	+ve	1667.1	1685.8	1699.5	1718.2
372.2	374.6	378.2	INFRATEL	-1.2	-80.2	1700	0.1	-ve	380.6	384.2	386.6	390.2
966.1	978.8	993.8	INFY	7.3	100.0	500	36.7	+ve	1006.5	1021.6	1034.3	1049.3
388.1	390.4	393.3	IOC	-12.3	-54.0	1500	0.3	+ve	395.6	398.5	400.8	403.7
255.2	256.7	258.8	ITC	-17.6	-59.9	2400	2.6	+ve	260.2	262.3	263.8	265.9
1007.4	1014.7	1024.3	KOTAKBANK	13.6	-35.9	800	8.3	+ve	1031.6	1041.1	1048.4	1058.0
1204.1	1209.7	1214.2	LT	23.9	45.6	750	-6.7	-ve	1219.8	1224.3	1229.9	1234.4
821.3	825.7	828.5	LUPIN	-22.3	-69.9	400	-2.0	+ve	832.9	835.7	840.1	842.9
1404.5	1413.0	1424.3	M&M	19.9	37.6	500	13.1	+ve	1432.9	1444.2	1452.7	1464.0
8415.6	8448.8	8480.3	MARUTI	56.1	90.0	75	161.6	+ve	8513.4	8544.9	8578.1	8609.6
177.4	178.4	179.6	NTPC	26.2	33.1	4000	3.3	+ve	180.6	181.9	182.9	184.1
179.2	180.0	180.7	ONGC	33.2	24.6	3750	3.1	-ve	181.6	182.3	183.1	183.8
205.3	206.6	208.8	POWERGRID	-21.1	4.1	4000	2.3	+ve	210.2	212.4	213.7	215.9
936.1	941.9	947.2	RELIANCE	40.8	26.0	1000	39.5	+ve	953.0	958.3	964.1	969.4
326.1	329.3	331.3	SBIN	34.9	89.5	3000	-5.4	-ve	334.5	336.5	339.7	341.7
520.2	526.9	538.5	SUNPHARMA	41.1	17.0	800	31.0	+ve	545.3	556.9	563.6	575.2
417.1	421.1	423.5	TATAMOTORS	33.3	-1.2	1500	2.5	+ve	427.5	429.9	433.9	436.3
694.4	699.1	703.8	TATASTEEL	46.6	3.2	1000	6.9	+ve	708.5	713.2	717.9	722.6
2650.3	2665.2	2681.0	TCS	39.5	71.0	250	-23.1	-ve	2695.9	2711.7	2726.6	2742.4
481.8	486.3	490.8	TECHM	53.3	46.9	1100	8.4	+ve	495.2	499.7	504.2	508.7
4147.0	4169.1	4204.9	ULTRACEMCO	18.4	27.6	200	-40.8	-ve	4227.0	4262.8	4284.9	4320.7
299.2	302.2	304.5	VEDL	18.3	-44.4	1750	-1.4	-ve	307.5	309.8	312.8	315.1
289.0	290.1	291.6	WIPRO	3.3	2.9	2400	-2.2	-ve	292.7	294.2	295.3	296.8
307.8	310.2	311.6	YESBANK	-20.6	-46.5	1750	5.7	+ve	314.0	315.4	317.8	319.2
728.2	735.8	740.7	UPL	-20.4	-26.7	1200	19.1	+ve	748.4	753.3	760.9	765.8
544.3	550.8	558.1	ZEEL	31.9	81.8	1300	28.5	+ve	564.6	571.9	578.4	585.7

Pivot Table: Next Nifty stock Futures (Week: 27 Nov-01 Dec 2017)

S3	S2	S1	Scrip	CMO 15	CMO 5	Lot Size	Wkly Chg	ST Trend	Pivot	R1	R2	R3
1667.7	1683.4	1692.5	ACC	-11.2	-36.8	400	-69.8	-ve	1708.2	1717.3	1733.0	1742.1
110.9	112.6	115.5	ASHOKLEY	27.2	-48.6	7000	2.3	+ve	117.2	120.1	121.8	124.7
5064.6	5098.3	5129.6	BAJAJFINSV	7.9	-30.3	125	10.5	+ve	5163.3	5194.6	5228.3	5259.6
172.3	174.5	175.9	BANKBARODA	31.9	64.4	3500	-6.3	-ve	178.1	179.5	181.7	183.1
178.7	181.6	183.3	BEL	44.1	60.4	4950	6.2	+ve	186.2	187.9	190.8	192.5
90.1	91.2	91.9	BHEL	19.2	25.1	7500	4.3	+ve	93.0	93.6	94.7	95.4
4638.0	4679.7	4716.9	BRITANNIA	53.6	29.3	200	-3.7	-ve	4758.6	4795.8	4837.5	4874.7
433.6	438.1	442.6	CADILAHC	-18.6	-75.6	1600	-1.6	-ve	447.1	451.6	456.1	460.6
1034.8	1039.6	1047.4	COLPAL	1.7	24.5	700	9.7	+ve	1052.2	1060.0	1064.8	1072.6
1315.8	1325.7	1337.7	CONCOR	41.4	30.6	625	-1.4	+ve	1347.6	1359.6	1369.5	1381.5
837.2	847.4	855.7	CUMMINSIND	-12.2	-33.9	600	3.4	+ve	865.8	874.1	884.3	892.6
331.9	336.3	340.5	DABUR	39.7	68.6	2500	6.4	+ve	344.9	349.1	353.5	357.7
1001.7	1014.1	1031.7	DIVISLAB	56.8	69.8	800	26.1	+ve	1044.1	1061.6	1074.0	1091.6
215.2	218.3	223.2	DLF	53.9	82.7	5000	3.5	+ve	226.3	231.3	234.4	239.3
586.5	589.3	591.7	GLENMARK	-10.1	-19.5	700	8.4	+ve	594.5	597.0	599.8	602.2
933.1	942.1	957.3	GODREJCP	24.2	11.7	800	25.3	+ve	966.3	981.5	990.5	1005.7
502.5	506.2	512.9	HAVELLS	25.3	-30.0	2000	9.3	+ve	516.6	523.3	527.0	533.7
301.9	304.7	307.2	HINDZINC	31.1	-45.8	3200	-1.7	+ve	310.0	312.4	315.2	317.7
371.2	374.1	376.6	ICICIPRULI	-31.2	-35.2	1300	-14.9	-ve	379.5	382.0	384.9	387.4
89.5	91.8	93.3	IDEA	12.6	13.0	7000	-0.7	+ve	95.6	97.1	99.4	100.9
1145.8	1156.4	1168.3	INDIGO	-5.6	11.0	600	8.6	+ve	1178.9	1190.8	1201.4	1213.3
260.9	262.8	264.2	JSWSTEEL	40.3	45.6	3000	-1.7	+ve	266.1	267.5	269.4	270.8
586.6	592.1	595.6	LICHSGFIN	-23.9	-63.9	1100	-8.0	+ve	601.1	604.6	610.1	613.6
301.5	303.5	306.5	MARICO	-23.4	-55.3	2600	2.2	+ve	308.5	311.5	313.5	316.5
3185.5	3213.8	3240.4	MCDOWELL-N	50.2	84.5	250	72.8	+ve	3268.7	3295.2	3323.5	3350.1
340.1	342.2	344.5	MOTHERSUMI	23.0	-15.4	3750	-14.5	-ve	346.5	348.8	350.9	353.2
26.7	26.8	27.0	NHPC	-39.6	-27.5	27000	0.1	-ve	27.1	27.3	27.4	27.6
124.5	125.4	126.4	NMDC	17.8	41.0	6000	2.6	+ve	127.3	128.3	129.2	130.2
3577.9	3628.9	3676.3	OFSS	39.4	94.4	150	59.4	+ve	3727.4	3774.8	3825.8	3873.2
353.5	356.9	362.1	OIL	67.8	68.3	2266	12.1	+ve	365.5	370.6	374.0	379.2
2522.1	2555.0	2609.2	PEL	-4.9	-48.1	300	53.8	+ve	2642.1	2696.2	2729.1	2783.3
250.4	251.9	252.7	PETRONET	44.3	-40.0	3000	-1.8	-ve	254.2	255.1	256.6	257.4
124.3	125.4	126.5	PFC	14.5	-10.3	6000	0.7	+ve	127.6	128.7	129.8	130.9
830.4	835.2	839.2	PIDILITIND	24.8	44.8	1000	7.3	+ve	844.0	847.9	852.7	856.7
180.3	182.9	184.7	PNB	30.4	55.4	3500	-5.2	-ve	187.3	189.1	191.7	193.5
159.8	161.0	162.2	RECLTD	-2.1	14.8	6000	2.1	+ve	163.4	164.6	165.8	167.0
79.8	80.8	81.7	SAIL	43.0	60.2	12000	3.6	+ve	82.7	83.6	84.6	85.5
16780.5	16940.6	17029.8	SHREECEM	-5.1	-32.8	50	-1163.5	-ve	17189.8	17279.0	17439.1	17528.3
1148.0	1161.5	1176.9	SIEMENS	-14.2	-23.2	500	-3.6	+ve	1190.4	1205.8	1219.3	1234.7
1218.8	1226.8	1234.1	SRTRANSFIN	41.8	44.3	600	-61.9	-ve	1242.1	1249.5	1257.5	1264.8
860.9	867.2	872.8	SUNTV	40.1	48.0	1000	33.0	+ve	879.1	884.7	891.0	896.6
775.2	787.0	808.5	TITAN	52.6	90.6	1500	41.7	+ve	820.3	841.8	853.6	875.1
234.3	237.3	239.1	TATAMTRDVR	20.4	2.4	2100	-1.1	-ve	242.1	243.9	246.9	248.7
91.3	92.1	93.1	TATAPOWER	38.4	70.6	9000	4.6	+ve	93.9	94.9	95.7	96.7
1256.4	1264.7	1272.4	TORNTPHARM	9.4	-28.5	400	16.0	+ve	1280.8	1288.5	1296.8	1304.5
1051.7	1065.4	1076.9	UBL	61.8	74.6	700	-16.9	-ve	1090.5	1102.0	1115.7	1127.2

Pivot Table: Other stock futures above Rs 400 (Week: 27 Nov-01 Dec 2017)

S3	S2	S1	Scrip	CMO 15	CMO 5	Lot Size	Wkly Chg	ST Trend	Pivot	R1	R2	R3
1296.7	1305.2	1319.3	AJANTPHARM	22.6	67.7	400	58.4	+ve	1327.9	1342.0	1350.5	1364.6
773.6	780.7	785.6	AMARAJABAT	-4.4	85.2	600	-9.3	-ve	792.7	797.6	804.7	809.6
1087.8	1100.9	1117.5	APOLLOHOSP	-16.1	42.1	500	83.5	+ve	1130.6	1147.3	1160.4	1177.0
426.8	429.4	432.3	ARVIND	32.8	51.0	2000	11.1	+ve	434.9	437.7	440.3	443.2
2036.7	2056.7	2068.0	BALKRISIND	67.6	74.7	400	-12.1	-ve	2088.0	2099.3	2119.3	2130.6
711.7	719.9	730.5	BATAINDIA	29.7	-40.9	1100	-14.2	-ve	738.7	749.3	757.5	768.1
1604.6	1638.3	1660.6	BEML	10.4	2.9	300	46.8	+ve	1694.3	1716.6	1750.3	1772.6
950.3	960.7	976.1	BHARATFIN	58.5	-25.6	1000	19.6	+ve	986.5	1001.9	1012.3	1027.7
688.0	692.4	696.6	BHARATFORG	43.1	76.4	1200	1.5	+ve	701.0	705.2	709.6	713.8
405.6	409.6	412.4	BIOCON	35.6	37.5	1800	20.3	+ve	416.4	419.2	423.2	426.0
450.2	454.1	456.9	CANFINHOME	-45.4	-70.0	1250	-20.5	+ve	460.8	463.7	467.6	470.4
695.3	699.4	703.0	CAPF	0.2	-38.1	800	8.5	+ve	707.1	710.8	714.9	718.5
1790.3	1800.7	1812.2	CEATLTD	27.2	68.1	350	40.0	+ve	1822.6	1834.1	1844.5	1856.0
1314.2	1323.0	1329.9	CENTURYTEX	31.9	8.0	550	16.8	+ve	1338.7	1345.6	1354.4	1361.3
993.4	1002.0	1007.2	CESC	29.9	-39.7	550	2.7	-ve	1015.8	1021.0	1029.6	1034.8
416.5	422.0	426.5	CHENNPETRO	23.1	-9.6	1500	5.4	+ve	432.0	436.5	442.0	446.5
1252.4	1259.2	1266.4	CHOLAFIN	37.7	95.2	500	-3.7	-ve	1273.2	1280.4	1287.2	1294.4
2986.4	3003.2	3029.2	DALMIABHA	36.4	50.6	300	-29.4	+ve	3046.1	3072.1	3088.9	3114.9
592.6	604.3	611.9	DHFL	55.0	21.6	1500	-18.6	-ve	623.6	631.2	642.9	650.5
670.6	677.4	681.6	ESCORTS	30.4	-37.4	1100	-11.3	-ve	688.4	692.7	699.5	703.7
987.6	1001.3	1009.4	GODFRYPHLP	28.3	8.0	500	-30.7	-ve	1023.1	1031.2	1044.9	1053.0
551.0	555.4	559.8	GODREJIND	1.4	-62.3	1500	7.9	+ve	564.3	568.7	573.1	577.5
1171.3	1184.9	1195.1	GRASIM	23.8	24.1	750	23.6	+ve	1208.8	1219.0	1232.6	1242.8
395.7	402.4	407.5	INDIANB	48.0	98.2	2000	-1.4	-ve	414.2	419.4	426.1	431.2
627.6	639.9	647.4	JETAIRWAYS	23.6	69.8	1200	-38.9	-ve	659.7	667.2	679.5	687.0
1629.7	1668.0	1737.4	JUBLFOOD	74.4	92.6	500	42.4	+ve	1775.6	1845.0	1883.3	1952.7
514.7	519.9	527.4	JUSTDIAL	62.7	73.7	1200	-19.9	+ve	532.6	540.1	545.3	552.8
711.3	717.7	723.8	KAJARIACER	38.1	22.5	800	16.3	+ve	730.2	736.3	742.7	748.8
546.5	552.4	557.2	KSCL	12.3	5.0	1500	30.0	+ve	563.1	567.9	573.8	578.6
424.3	430.8	439.6	M&MFIN	21.3	41.2	1250	8.3	+ve	446.1	455.0	461.5	470.3
928.3	938.3	944.8	MCX	-16.3	-100.0	500	-2.3	+ve	954.7	961.2	971.2	977.7
550.1	556.1	559.9	MFSL	-23.3	1.9	1000	-9.1	-ve	565.9	569.7	575.7	579.5
1063.6	1074.8	1090.5	MGL	19.5	-31.3	600	25.3	+ve	1101.8	1117.5	1128.7	1144.4
501.1	505.2	509.3	MINDTREE	34.1	23.0	1200	-3.8	+ve	513.5	517.6	521.7	525.8
68778.3	69089.2	69301.3	MRF	34.4	91.4	15	-277.3	+ve	69612.1	69824.2	70135.1	70347.2
442.2	446.5	449.5	MUTHOOTFIN	3.3	-56.0	1500	-5.1	+ve	453.7	456.7	461.0	464.0
7316.9	7409.0	7466.0	NESTLEIND	41.3	34.6	100	-203.7	-ve	7558.0	7615.0	7707.1	7764.1
645.3	651.6	656.3	NIIITECH	61.4	49.3	1500	17.7	+ve	662.7	667.4	673.7	678.4
21600.0	21880.0	22266.0	PAGEIND	67.0	69.2	50	-803.0	-ve	22546.0	22932.0	23212.0	23598.0
1241.6	1270.9	1288.0	PVR	1.6	-21.4	400	-109.9	-ve	1317.3	1334.4	1363.7	1380.8
692.1	699.7	705.4	RAMCOCEM	14.2	17.9	800	-20.8	-ve	713.1	718.8	726.4	732.1
944.6	958.1	969.3	RAYMOND	48.3	62.3	800	26.7	+ve	982.8	994.1	1007.6	1018.8
489.6	499.8	507.0	RBLBANK	19.7	-33.2	1000	0.4	+ve	517.2	524.3	534.5	541.7
439.4	443.4	448.5	RELCAPITAL	-31.0	-45.2	750	19.6	+ve	452.6	457.7	461.7	466.8
440.9	444.2	448.3	RELINFRA	-5.9	-1.0	1300	13.4	+ve	451.7	455.8	459.1	463.2
616.5	620.2	625.4	REPCOHOME	-2.7	-14.4	700	6.6	+ve	629.1	634.2	637.9	643.1
1788.2	1816.4	1833.9	SRF	54.0	100.0	500	69.7	+ve	1862.1	1879.5	1907.7	1925.2
810.2	815.1	819.3	STAR	-11.7	-40.4	500	32.3	+ve	824.1	828.3	833.2	837.4
731.4	735.3	738.7	TATACHEM	56.7	27.9	1500	21.8	+ve	742.6	745.9	749.8	753.2
680.7	686.4	690.4	TATACOMM	32.9	-8.4	700	-8.8	-ve	696.1	700.2	705.9	709.9
930.3	939.4	946.9	TATAELXSI	33.2	88.6	800	57.3	+ve	955.9	963.4	972.5	980.0
729.4	732.8	735.9	TVSMOTOR	74.5	67.0	1000	27.6	+ve	739.3	742.5	745.9	749.0
392.8	398.4	406.7	UJJIVAN	41.8	71.4	1200	23.3	+ve	412.3	420.5	426.1	434.4
608.6	614.2	619.5	VOLTAS	48.9	100.0	1000	12.8	+ve	625.0	630.3	635.9	641.2
681.9	693.5	701.7	WOCKPHARMA	55.1	88.8	800	-6.0	-ve	713.3	721.5	733.1	741.3



Pivot Table: Other stock futures between Rs100-400 (Week: 27 Nov-01 Dec 2017)

S3	S2	S1	Scrip	CMO 15	CMO 5	Lot Size	Wkly Chg	ST Trend	Pivot	R1	R2	R3
145.4	147.8	150.7	ADANIENT	36.2	80.0	4000	-3.5	+ve	153.1	156.1	158.5	161.4
248.0	249.7	251.8	APOLLTYRE	-5.8	44.2	3000	16.6	+ve	253.5	255.6	257.3	259.4
158.5	160.8	162.3	BALRAMCHIN	-3.5	15.8	3500	1.2	+ve	164.6	166.1	168.4	169.9
195.5	197.8	199.5	BANKINDIA	41.9	71.7	6000	-7.0	-ve	201.9	203.6	205.9	207.6
250.8	252.6	254.4	BERGEPAIN	15.8	-6.4	2200	-0.1	+ve	256.3	258.1	259.9	261.7
380.9	385.7	388.8	CANBK	28.9	73.6	3084	1.3	+ve	393.6	396.6	401.4	404.5
383.9	387.4	391.3	CASTROLIND	14.9	29.6	1400	-2.1	+ve	394.8	398.7	402.2	406.1
180.2	181.9	184.6	DCBBANK	17.7	32.6	4500	7.8	+ve	186.3	189.0	190.7	193.4
178.2	180.4	182.3	ENGINEERSIN	43.6	69.1	3500	0.0	-ve	184.5	186.4	188.6	190.5
142.5	144.0	145.2	EQUITAS	-14.4	-26.9	3200	4.9	+ve	146.8	148.0	149.5	150.7
202.6	203.9	205.3	EXIDEIND	5.2	-1.5	4000	5.1	+ve	206.6	207.9	209.2	210.6
110.4	111.2	111.8	FEDERALBNK	16.0	-100.0	5500	-0.5	-ve	112.5	113.1	113.9	114.5
127.4	129.8	134.2	FORTIS	-16.7	-27.7	2700	8.3	+ve	136.6	141.0	143.4	147.8
120.9	121.9	123.6	GRANULES	15.5	-55.9	5000	2.6	+ve	124.6	126.4	127.4	129.1
139.7	141.3	142.5	GSFC	20.7	11.4	4500	6.8	+ve	144.1	145.2	146.8	148.0
316.2	320.6	323.5	HEXAWARE	53.4	59.8	3000	-5.6	-ve	327.9	330.7	335.1	338.0
196.4	201.4	204.9	IBREALEST	-12.4	-10.9	2500	-8.8	-ve	209.8	213.3	218.3	221.8
120.4	122.4	125.6	ICIL	16.0	58.7	3500	0.4	+ve	127.6	130.7	132.7	135.9
293.9	299.0	306.3	IGL	53.0	7.1	2750	10.7	+ve	311.4	318.7	323.8	331.1
170.0	172.0	173.9	INDIACEM	-0.4	-3.1	3500	-2.1	+ve	175.9	177.8	179.8	181.7
167.9	170.5	173.3	INFIBEAM	42.0	80.9	4000	-5.2	-ve	175.8	178.6	181.2	184.0
225.0	227.3	230.1	IRB	32.4	42.0	2500	-0.8	+ve	232.3	235.1	237.4	240.2
164.6	166.7	169.7	JINDALSTEL	51.5	81.2	4500	7.1	+ve	171.8	174.8	176.9	179.9
109.6	110.8	112.1	JISLJALEQS	24.8	40.5	9000	7.6	+ve	113.3	114.6	115.8	117.1
171.3	172.9	174.5	KPIT	76.1	100.0	4000	9.7	+ve	176.2	177.8	179.4	181.0
156.1	157.6	158.6	KTKBANK	21.7	7.4	3800	1.6	+ve	160.1	161.1	162.6	163.6
171.8	174.8	176.5	L&TFH	14.5	-84.5	4500	-12.3	-ve	179.5	181.3	184.3	186.0
98.0	100.0	103.5	MANAPPURAM	31.2	23.5	6000	3.5	+ve	105.5	109.0	111.0	114.5
123.2	124.4	125.4	MRPL	11.7	-14.1	4500	4.3	+ve	126.7	127.7	128.9	129.9
258.2	261.1	263.4	NBCC	68.4	37.4	3000	-3.9	-ve	266.3	268.7	271.6	273.9
104.5	106.5	108.9	NCC	46.2	59.6	8000	7.0	+ve	110.9	113.3	115.3	117.7
126.1	127.9	129.9	ORIENTBANK	13.6	40.9	6000	3.2	+ve	131.6	133.6	135.4	137.4
355.2	361.7	373.1	PCJEWELLER	33.3	26.6	1500	20.1	+ve	379.6	391.1	397.6	409.0
117.5	118.7	120.1	PTC	26.3	9.2	8000	4.6	+ve	121.2	122.6	123.8	125.2
98.5	99.8	101.6	SREINFRA	-11.2	-55.6	5000	3.2	+ve	102.9	104.6	105.9	107.7
271.5	273.5	276.5	TATAGLOBAL	77.6	100.0	4500	18.8	+ve	278.5	281.5	283.5	286.5
265.9	268.0	270.2	TORNTPOWER	57.9	53.6	3000	8.4	+ve	272.3	274.5	276.6	278.8
163.8	165.4	166.6	UNIONBANK	37.4	65.0	4000	-3.4	-ve	168.2	169.3	170.9	172.1
224.8	228.5	233.7	VGUARD	59.5	93.2	3000	14.7	+ve	237.3	242.5	246.2	251.4

Pivot Table: Other stock futures below Rs 100 (Week: 27 Nov-01 Dec 2017)

S3	S2	S1	Scrip	CMO 15	CMO 5	Lot Size	Wkly Chg	ST Trend	Pivot	R1	R2	R3
34.5	34.7	35.1	ADANIPOWER	38.7	87.8	20000	1.1	+ve	35.4	35.8	36.0	36.4
75.9	76.9	77.9	ALBK	31.2	64.2	10000	-0.8	+ve	78.9	79.8	80.8	81.8
62.8	63.8	64.8	ANDHRABANK	39.0	61.8	10000	0.0	+ve	65.8	66.8	67.8	68.8
82.1	83.6	84.6	CGPOWER	21.8	51.6	12000	1.8	+ve	86.1	87.1	88.6	89.6
76.4	77.7	79.9	DISHTV	26.4	71.3	7000	5.5	+ve	81.3	83.5	84.8	87.0
15.4	16.2	17.4	GMRINFRA	20.5	41.3	45000	1.7	+ve	18.2	19.4	20.2	21.4
36.2	36.6	37.0	HCC	13.3	36.8	12000	0.3	+ve	37.4	37.8	38.2	38.6
59.8	60.7	61.6	HDIL	13.4	70.2	8000	-1.8	+ve	62.4	63.3	64.2	65.1
60.1	60.8	61.4	IDBI	29.2	48.7	8000	2.3	+ve	62.1	62.7	63.4	64.0
59.6	60.3	60.7	IDFC	27.5	-58.2	13200	-0.1	-ve	61.4	61.8	62.5	62.9
53.4	53.9	54.4	IDFCBANK	5.4	-18.6	9000	-0.4	-ve	54.9	55.4	55.9	56.4
24.2	24.4	24.5	IFCI	30.0	42.9	22000	0.8	+ve	24.7	24.8	25.0	25.1
109.6	110.8	112.1	JISLJLEQS	24.8	40.5	9000	7.6	+ve	113.3	114.6	115.8	117.1
18.0	18.3	18.6	JPASSOCIAT	-18.1	28.6	34000	0.3	-ve	18.8	19.1	19.4	19.7
79.8	81.2	82.6	JSWENERGY	43.1	18.7	8500	3.6	+ve	83.9	85.3	86.7	88.1
98.0	100.0	103.5	MANAPPURAM	31.2	23.5	6000	3.5	+ve	105.5	109.0	111.0	114.5
79.5	80.5	81.2	NATIONALUM	34.4	-15.7	8000	0.0	-ve	82.2	82.9	83.9	84.6
12.6	13.0	13.3	RCOM	-36.7	-38.7	14000	1.3	+ve	13.7	14.0	14.4	14.7
42.4	42.8	43.5	RNAVAL	-19.3	-35.4	9000	2.2	+ve	43.9	44.6	45.0	45.7
37.5	37.8	38.1	RPOWER	-1.7	-10.0	12000	1.5	+ve	38.4	38.7	39.0	39.3
30.9	31.1	31.3	SOUTHBANK	38.0	-13.2	33141	0.9	+ve	31.5	31.7	31.9	32.1
13.6	13.7	14.0	SUZLON	-10.9	-27.5	30000	0.4	+ve	14.1	14.4	14.5	14.8
89.0	90.6	92.6	SYNDIBANK	63.1	100.0	9000	4.4	+ve	94.2	96.2	97.8	99.8
42.4	44.1	47.3	TV18BRDCST	56.3	83.2	17000	4.6	+ve	49.0	52.2	53.9	57.1

Contact Person Detail

SURYA NARAYAN NAYAK
HEAD - Research & Sales
Email - surya.nayak@kcsecurities.com
Contact No - +9122 - 67236089

Kantilal Chhaganlal Securities Pvt Ltd
Vilco Center, 'A' Wing, Near Garware House, 8,
Subhash Road, Ville Parle (E), Mumbai 400 057 Tel
No: +91 022-6723 6000/6001 Fax: +91 22 6723 6088

Disclaimer

This is solely for information of clients of Kantilal Chhaganlal Securities and does not construe to be an investment advice. It is also not intended as an offer or solicitation for the purchase and sale of any financial instruments. Any action taken by you on the basis of the information contained herein is your responsibility alone and Kantilal Chhaganlal Securities its subsidiaries or its employees or associates will not be liable in any manner for the consequences of such action taken by you. We have exercised due diligence in checking the correctness and authenticity of the information contained in this recommendation, but Kantilal Chhaganlal Securities or any of its subsidiaries or associates or employees shall not be in any way responsible for any loss or damage that may arise to any person from any inadvertent error in the information contained in this recommendation or any action taken on basis of this information. Technical analysis studies market psychology, price patterns and volume levels. It is used to forecast future price and market movements. Technical analysis is complementary to fundamental analysis and news sources. The recommendations issued herewith might be contrary to recommendations issued by Kantilal Chhaganlal Securities in the company research undertaken as the recommendations stated in this report is derived purely from technical analysis. Kantilal Chhaganlal Securities has based this document on information obtained from sources it believes to be reliable but which it has not independently verified; Kantilal Chhaganlal Securities makes no guarantee, representation or warranty and accepts no responsibility or liability as to its accuracy or completeness. The opinions contained within the report are based upon publicly available information at the time of publication and are subject to change without notice. The information and any disclosures provided herein are in summary form and have been prepared for informational purposes. The recommendations and suggested price levels are intended purely for trading purposes. The recommendations are valid for the day of the report however trading trends and volumes might vary substantially on an intraday basis and the recommendations may be subject to change. The information and any disclosures provided herein may be considered confidential. Any use, distribution, modification, copying, forwarding or disclosure by any person is strictly prohibited. The information and any disclosures provided herein do not constitute a solicitation or offer to purchase or sell any security or other financial product or instrument. The current performance may be unaudited. Past performance does not guarantee future returns. There can be no assurance that investments will achieve any targeted rates of return, and there is no guarantee against the loss of your entire investment. **POTENTIAL CONFLICT OF INTEREST DISCLOSURE** (as on date of report) Disclosure of interest statement – Analyst interest of the stock /Instrument(s): - No. Firm interest of the stock / Instrument (s): - No.