

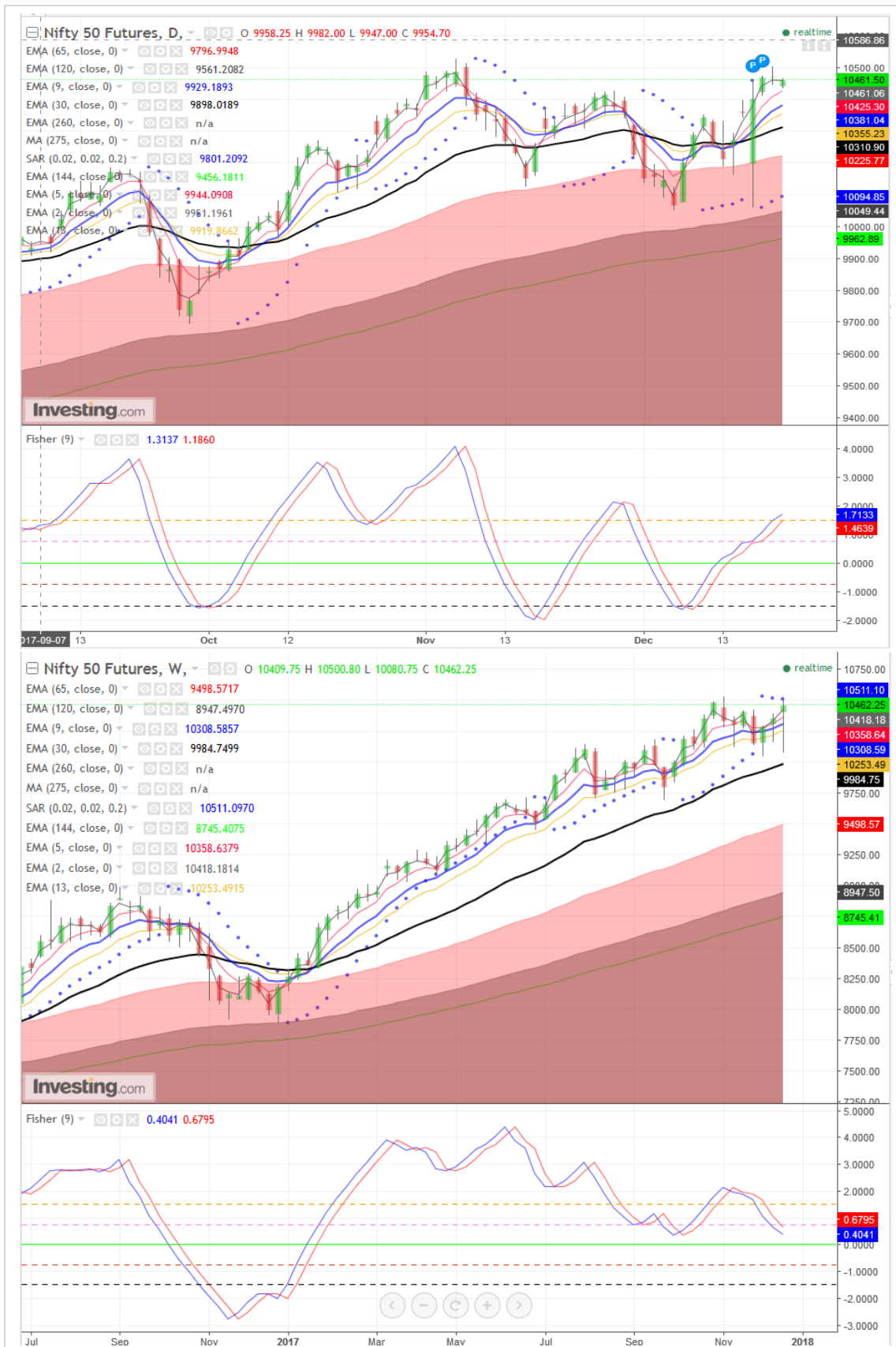
Indian Market

- SGX NIFTY flat to minor -ve: -0.07% /7points at 10464 (at 9:10 IST).
- Market is consolidating its recent gains with sustaining minor weakness. The minutes of MPC meeting say the members including RBI Governor were worried about rising inflation on crude oil's north movement and dim prospect of rate easing going forward. Major banks HDFC Bank is readying to raise big growth capital. Action in selective mid-cap and Small-cap is active, in the absence of any immediate direction in broad market.
- Expect consolidation in NIFTY to continue as we slowly approaching the December quarter earnings season (Mid-Jan). The low base effect due to damage by demonetization would have positive trigger in corporate earnings. Hardening oil prices would check gains in broad market.

Market background

- Asian markets offered a muted reaction on Thursday to the passage of U.S. tax cuts as benefits to company bottom lines were already factored into stock prices, while bonds were spooked by the blowout in government debt needed to fund the giveaways. Dow fell 0.11%, S&P 500 slipped 0.08% while Nasdaq too slipped 0.04%
- NIKKEI 225 was flat -0.02%, ASX200 was trading with 0.21% loss HANG SENG advanced 0.52%, Kospi 200 was dipping -1.28%, China-A50 was rallied 1.21%, All US key indices futures were trading with gains upto 0.05%.
- The Bank of Japan kept monetary policy steady on Thursday despite growing signs of strength in the economy, signalling that it was in no rush to edge away from crisis-mode stimulus with inflation still distant from its 2 percent target.
- U.S. home sales increased more than expected in November, hitting their highest level in nearly 11 years, the latest indication that housing was regaining momentum after almost stalling this year.
- Oil prices were stable on Thursday after posting strong gains late in the previous session on the back of a drop in U.S. crude inventories. WTI was trading at \$58.05 per barrel while Brent crude future was ruling at \$64.44 per barrel.

SGX Nifty: Daily and Weekly Chart



Weekly Pivot Table (Nifty and its parts, Spot/Cash)

ScripName	R2	R1	PIVOT	S1	S2
Nifty 50	10427.45	10346.55	10189.95	10109.05	9952.45
NiftyBank	25721.58	25521.37	25167.48	24967.27	24613.38
ADANI PORTS	408.77	401.08	389.22	381.53	369.67
AMBUJACEM	278.53	273.32	264.78	259.57	251.03
ASIANPAINT	1183.83	1159.67	1129.33	1105.17	1074.83
AUROPHARMA	700.17	686.33	668.17	654.33	636.17
AXISBANK	554.1	548.3	538.7	532.9	523.3
BAJAJ-AUTO	3331.78	3272.22	3187.43	3127.87	3043.08
BAJFINANCE	1758.75	1730.5	1695.75	1667.5	1632.75
BHARTIARTL	564.95	545.05	510.95	491.05	456.95
BOSCHLTD	20990.02	20270.13	19678.97	18959.08	18367.92
BPCL	533.12	523.78	506.57	497.23	480.02
CIPLA	618.17	610.63	599.47	591.93	580.77
COALINDIA	278.42	271.63	266.82	260.03	255.22
DRREDDY	2308.92	2247.18	2213.27	2151.53	2117.62
EICHERMOT	30603.18	29801.57	28956.28	28154.67	27309.38
GAIL	527.5	505	477.4	454.9	427.3
HCLTECH	903.98	887.22	856.03	839.27	808.08
HDFC	1720.42	1701.68	1671.27	1652.53	1622.12
HDFCBANK	1887.33	1863.87	1831.43	1807.97	1775.53
HEROMOTOCO	3704.28	3611.92	3542.63	3450.27	3380.98
HINDALCO	252.23	245.97	237.68	231.42	223.13
HINDPETRO	449.48	438.97	419.48	408.97	389.48
HINDUNILVR	1389.42	1358.03	1299.62	1268.23	1209.82
IBULHSGFIN	1246.52	1226.03	1188.52	1168.03	1130.52
ICICIBANK	320.68	315.72	306.93	301.97	293.18
INDUSINDBK	1707.35	1689.2	1667.65	1649.5	1627.95
INFRATEL	398.17	385.93	376.22	363.98	354.27
INFY	1030.92	1016.38	992.47	977.93	954.02
IOC	422.68	413.77	397.88	388.97	373.08
ITC	271.67	266.93	258.47	253.73	245.27
KOTAKBANK	1024	1016.5	1004.5	997	985
LT	1252.05	1236.2	1212.6	1196.75	1173.15
LUPIN	842.12	832.48	819.37	809.73	796.62
M&M	1447.08	1417.62	1390.53	1361.07	1333.98
MARUTI	9539.38	9290.82	8870.43	8621.87	8201.48
NTPC	186.67	183.53	179.12	175.98	171.57
ONGC	188.25	184.25	179.8	175.8	171.35
POWERGRID	208.4	205.75	201.3	198.65	194.2
RELIANCE	959.3	940.15	917.8	898.65	876.3
SBIN	326.1	319.6	314.2	307.7	302.3
SUNPHARMA	543.02	532.43	519.22	508.63	495.42
TATAMOTORS	425.38	418.27	406.63	399.52	387.88
TATASTEEL	743.93	720.87	690.78	667.72	637.63
TCS	2680.5	2641	2619	2579.5	2557.5
TECHM	523	509.55	486.1	472.65	449.2
ULTRACEMCO	4307.95	4236.75	4126.55	4055.35	3945.15
UPL	768.65	748.35	716.5	696.2	664.35
VEDL	307.23	299.22	288.43	280.42	269.63
WIPRO	295.77	289.33	284.67	278.23	273.57
YESBANK	324.5	318.6	309.6	303.7	294.7
ZEEL	590.73	576.87	565.03	551.17	539.33

Contact Person Detail

SURYA NARAYAN NAYAK
HEAD - Research & Sales
Email - surya.nayak@kcsecurities.com
Contact No - +9122 - 67236089

Kantilal Chhaganlal Securities Pvt Ltd
Vilco Center, 'A' Wing, Near Garware House, 8,
Subhash Road, Ville Parle (E), Mumbai 400 057 Tel
No: +91 022-6723 6000/6001 Fax: +91 22 6723 6088

Disclaimer

This is solely for information of clients of Kantilal Chhaganlal Securities and does not construe to be an investment advice. It is also not intended as an offer or solicitation for the purchase and sale of any financial instruments. Any action taken by you on the basis of the information contained herein is your responsibility alone and Kantilal Chhaganlal Securities its subsidiaries or its employees or associates will not be liable in any manner for the consequences of such action taken by you. We have exercised due diligence in checking the correctness and authenticity of the information contained in this recommendation, but Kantilal Chhaganlal Securities or any of its subsidiaries or associates or employees shall not be in any way responsible for any loss or damage that may arise to any person from any inadvertent error in the information contained in this recommendation or any action taken on basis of this information. Technical analysis studies market psychology, price patterns and volume levels. It is used to forecast future price and market movements. Technical analysis is complementary to fundamental analysis and news sources. The recommendations issued herewith might be contrary to recommendations issued by Kantilal Chhaganlal Securities in the company research undertaken as the recommendations stated in this report is derived purely from technical analysis. Kantilal Chhaganlal Securities has based this document on information obtained from sources it believes to be reliable but which it has not independently verified; Kantilal Chhaganlal Securities makes no guarantee, representation or warranty and accepts no responsibility or liability as to its accuracy or completeness. The opinions contained within the report are based upon publicly available information at the time of publication and are subject to change without notice. The information and any disclosures provided herein are in summary form and have been prepared for informational purposes. The recommendations and suggested price levels are intended purely for trading purposes. The recommendations are valid for the day of the report however trading trends and volumes might vary substantially on an intraday basis and the recommendations may be subject to change. The information and any disclosures provided herein may be considered confidential. Any use, distribution, modification, copying, forwarding or disclosure by any person is strictly prohibited. The information and any disclosures provided herein do not constitute a solicitation or offer to purchase or sell any security or other financial product or instrument. The current performance may be unaudited. Past performance does not guarantee future returns. There can be no assurance that investments will achieve any targeted rates of return, and there is no guarantee against the loss of your entire investment. **POTENTIAL CONFLICT OF INTEREST DISCLOSURE (as on date of report)** Disclosure of interest statement – Analyst interest of the stock /Instrument(s): - No. Firm interest of the stock / Instrument (s): - No.