

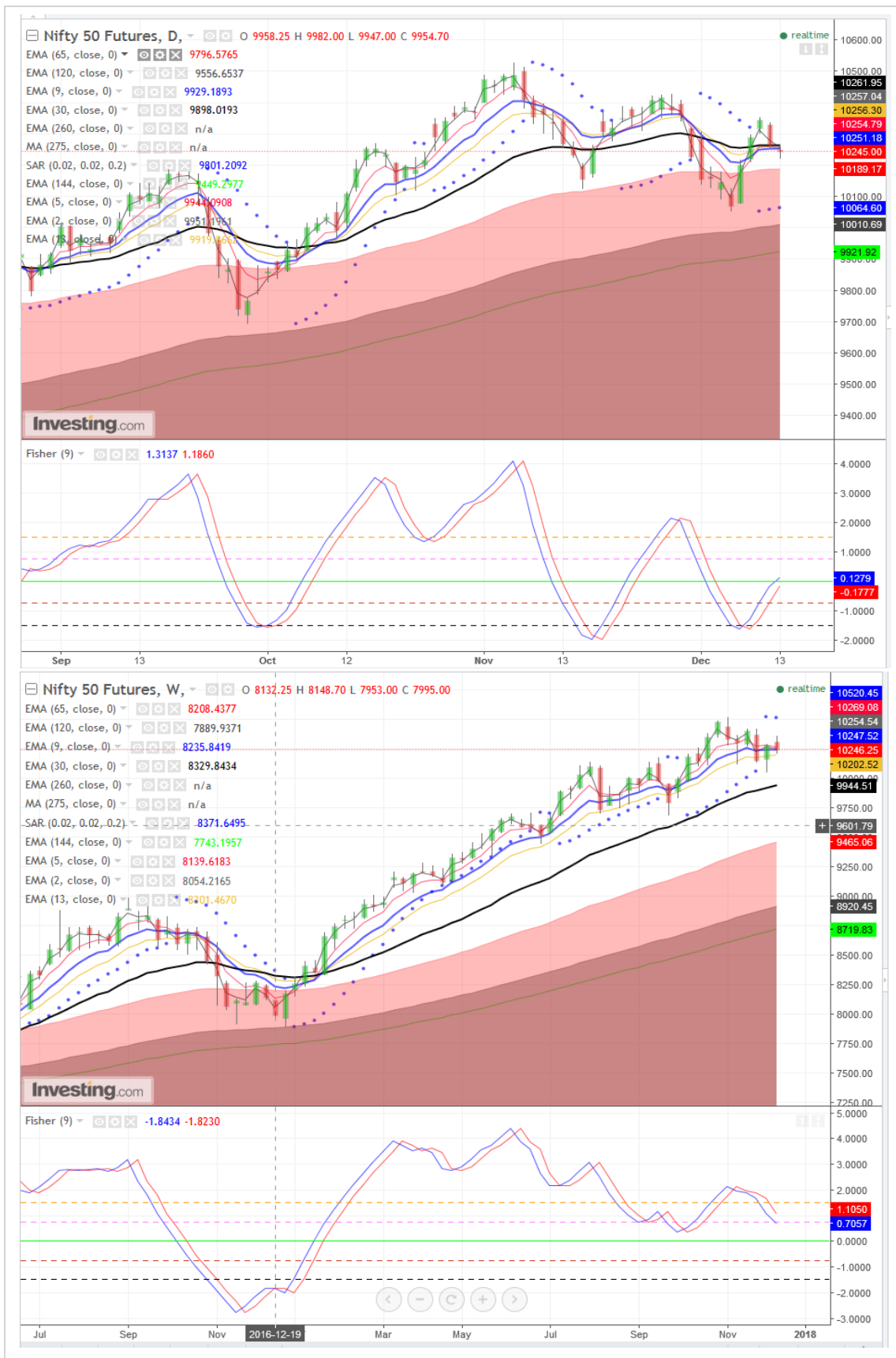
Indian Market

- SGX NIFTY down 0.32% /32 points at 10232 (at 9:10 IST)
- Expect NIFTY to trade in sideways with negative bias on weak IIP numbers. However, the IIP number has come with lag as PMI figure showed improvement in manufacturing activity level. Gujarat poll result speculation is keeping the investors in the jittery mode.

Market background

- Asian equities opened little changed as traders await U.S. and European central bank meetings this week for further clues on the 2018 policy outlook.
- NIKKEI 225 was down 0.49%, HANG SENG gaining 0.32%, Kospi 200 +0.61%, while China-A50 was up by 0.24%, ASX200 was trading in negative zone with 0.1% loss. All US key indices futures were trading with loss upto 0.25%.
- The Fed's two-day policy meeting will conclude later on Wednesday. The U.S. central bank is seen raising its benchmark rate to between 1.25 and 1.50 percent, with investors also focusing on clues to the pace of tightening next year as inflation remains cool. Those decisions may be influenced by news on Tuesday that U.S. wholesale inflation rose last month. Consumer price index (CPI) data will be released later in the global session on Wednesday.
- U.S. stocks finished higher. Dow ended 0.49%, S&P 500 0.15% higher while Nasdaq eased 0.19%.
- Crude oil futures steadied after facing profit-taking pressure when they surged to two-year highs in the previous session on an unplanned closure of the pipeline that carries the largest volume of North Sea crude oil. WTI gained 0.70% to \$57.54 per barrel while Brent crude future was gaining 1.01% to \$63.95 per barrel.

SGX Nifty: Daily and Weekly Chart





Weekly Pivot Table (Nifty and its parts, Spot/Cash)

ScripName	R2	R1	PIVOT	S1	S2
ADANI PORTS	415.02	400.88	391.47	377.33	367.92
Ambuja Cements Ltd	272.68	268.12	263.68	259.12	254.68
ASIAN PAINTS LIMITED	1192.88	1163.32	1146.78	1117.22	1100.68
Aurobindo Pharma Ltd.	743.67	708.03	688.12	652.48	632.57
Axis Bank Limited	577.88	555.87	543.88	521.87	509.88
Bajaj Auto Limited	3435.9	3326.4	3264.3	3154.8	3092.7
BAJAJ FINANCE LIMITED	1812.73	1762.17	1733.73	1683.17	1654.73
Bharat Petroleum Ltd	525.03	510.72	502.18	487.87	479.33
Bharti Airtel Limited	506.55	495.35	488.6	477.4	470.65
BHARTI INFRA TEL LIMITED	395.82	390.88	383.47	378.53	371.12
Bosch Limited	22646.15	21317.2	20059.8	18730.8	17473.5
Cipla Ltd	632.5	615.3	604.5	587.3	576.5
COALINDIA	287.25	279.65	274.5	266.9	261.75
Dr. Reddys Lab Ltd	2356.17	2295.03	2258.77	2197.63	2161.37
Eicher Motors Ltd	31786.32	30533.6	29846.3	28593.6	27906.3
GAIL (India) Limited	483.6	469.7	459.5	445.6	435.4
HCL Technologies Ltd.	877.33	853.67	840.38	816.72	803.43
HDFC Bank Ltd.	1890.07	1869.13	1854.57	1833.63	1819.07
HDFC Ltd.	1768.23	1713.52	1682.28	1627.57	1596.33
Hero MotoCorp Limited	3763.02	3683.53	3615.52	3536.03	3468.02
Hindalco Ind Ltd.	260.88	248.12	240.83	228.07	220.78
Hindustan Petroleum Corp	436.78	423.17	414.83	401.22	392.88
Hindustan Unilever Ltd	1294.8	1272.65	1258.95	1236.8	1223.1
IBULHSGFIN	1258.72	1201.73	1167.02	1110.03	1075.32
ICICI BANK LTD.	323.62	314.43	309.42	300.23	295.22
Indian Oil Corp. Ltd.	401.48	394.67	390.93	384.12	380.38
IndusInd Bank Ltd.	1710.53	1685.82	1667.28	1642.57	1624.03
Infosys Limited	1023.83	991.32	974.18	941.67	924.53
ITC Ltd.	262.63	258.92	256.78	253.07	250.93
Kotak Mahindra Bank Limi	1059.88	1032.52	1014.33	986.97	968.78
Larsen & Toubro Limited	1245.22	1228.43	1218.22	1201.43	1191.22
Lupin Limited	850.53	832.37	821.73	803.57	792.93
Mah & Mah Ltd.	1461.43	1435.42	1417.98	1391.97	1374.53
Maruti Suzuki India Ltd	8834.33	8721.67	8583.33	8470.67	8332.33
Nifty 50	10514.3	10318.1	10213.3	10017.1	9912.3
Nifty Bank	26233.55	25712.8	25432.7	24911.9	24631.9
NTPC Limited	189.83	185.57	182.58	178.32	175.33
Oil & Natural Gas Corp	186.48	183.07	181.03	177.62	175.58
Power Grid Corporation o	215.32	209.13	205.67	199.48	196.02
Reliance Industries Ltd	974.9	942.5	925.1	892.7	875.3
State Bank of India	346.08	329.42	320.33	303.67	294.58
Sun Pharma Ltd	568.95	547.45	534.85	513.35	500.75
TATA CONSULTANCY SERV LT	2732.18	2681.07	2651.28	2600.17	2570.38
Tata Motors Limited	434.97	416.93	406.72	388.68	378.47
Tata Steel Limited	726.17	703.53	690.27	667.63	654.37
TECH MAHINDRA LIMITED	515.3	494.1	481.6	460.4	447.9
UltraTech Cement Limited	4388.25	4286.6	4220.15	4118.5	4052.05
UPL LIMITED	788.13	759.02	739.63	710.52	691.13
Vedanta limited	317.03	301.87	293.68	278.52	270.33
Wipro Ltd	305.03	297.22	292.63	284.82	280.23
YES BANK LIMITED	321.48	314.17	309.58	302.27	297.68
Zee Entertain. Enterp.Lt	611.3	584.05	569.4	542.15	527.5

Contact Person Detail

SURYA NARAYAN NAYAK
HEAD - Research & Sales
Email - surya.nayak@kcsecurities.com
Contact No - +9122 - 67236089

Kantilal Chhaganlal Securities Pvt Ltd
Vilco Center, 'A' Wing, Near Garware House, 8,
Subhash Road, Ville Parle (E), Mumbai 400 057 Tel
No: +91 022-6723 6000/6001 Fax: +91 22 6723 6088

Disclaimer

This is solely for information of clients of Kantilal Chhaganlal Securities and does not construe to be an investment advice. It is also not intended as an offer or solicitation for the purchase and sale of any financial instruments. Any action taken by you on the basis of the information contained herein is your responsibility alone and Kantilal Chhaganlal Securities its subsidiaries or its employees or associates will not be liable in any manner for the consequences of such action taken by you. We have exercised due diligence in checking the correctness and authenticity of the information contained in this recommendation, but Kantilal Chhaganlal Securities or any of its subsidiaries or associates or employees shall not be in any way responsible for any loss or damage that may arise to any person from any inadvertent error in the information contained in this recommendation or any action taken on basis of this information. Technical analysis studies market psychology, price patterns and volume levels. It is used to forecast future price and market movements. Technical analysis is complementary to fundamental analysis and news sources. The recommendations issued herewith might be contrary to recommendations issued by Kantilal Chhaganlal Securities in the company research undertaken as the recommendations stated in this report is derived purely from technical analysis. Kantilal Chhaganlal Securities has based this document on information obtained from sources it believes to be reliable but which it has not independently verified; Kantilal Chhaganlal Securities makes no guarantee, representation or warranty and accepts no responsibility or liability as to its accuracy or completeness. The opinions contained within the report are based upon publicly available information at the time of publication and are subject to change without notice. The information and any disclosures provided herein are in summary form and have been prepared for informational purposes. The recommendations and suggested price levels are intended purely for trading purposes. The recommendations are valid for the day of the report however trading trends and volumes might vary substantially on an intraday basis and the recommendations may be subject to change. The information and any disclosures provided herein may be considered confidential. Any use, distribution, modification, copying, forwarding or disclosure by any person is strictly prohibited. The information and any disclosures provided herein do not constitute a solicitation or offer to purchase or sell any security or other financial product or instrument. The current performance may be unaudited. Past performance does not guarantee future returns. There can be no assurance that investments will achieve any targeted rates of return, and there is no guarantee against the loss of your entire investment. **POTENTIAL CONFLICT OF INTEREST DISCLOSURE** (as on date of report) Disclosure of interest statement – Analyst interest of the stock /Instrument(s): - No. Firm interest of the stock / Instrument (s): - No.