

## Indian Market View

Nifty is waiting for some fresh triggers as it consolidates around 11300-11400 level for past 7 trading days. Corporate results have been though remained modest upbeat, is lending hope that in forthcoming quarters the results would be improve (profitable) further, as the inflated raw material prices are witnessing near top. Till writing this note, US indices futures were trading flat after closing near 0.5% higher overnight. and NIKKEI 225 was rallying 1%. However, Chinese shares after recent recovery is on sideways consolidation. SGX Nifty (11433) was trading flat with meagre gains of 0.1%/10 points. Oil prices are hardly changed. Expect Nifty to continue to trade in narrow range with mild upbias. Four NIFTY constituents having combined weight of 2.45% would report their June Quarter results today. Recovery activity in mid-cap likely to be sustained on value buying.

## Noted Corporate Development

- Gujarat High Court dismissed tax demand petition filed by Gujarat Sales Tax department against **GAIL**.
- **Glenmark Pharma** received U.S. FDA acceptance of NDA for Ryaltris for Patients with Seasonal Allergic Rhinitis
- **Mphasis** board approved Rs 988.3 crore buyback of up to 73.3 lakh shares (3.79 percent equity) at Rs 1,350 each.
- **BIRLACORP** announced greenfield capex programme under subsidiary Reliance Cement (acquired last year) worth Rs2450cr of 3.9mtpa ( estimated @\$92/EV per ton) at Yavatmal/Maharashtra

## Earnings to watch

### F&O Segment

- BALRAMCHIN
- BEML
- BPCL (Nifty: 0.72%)
- CIPLA (Nifty: 0.73%)
- HCC
- HINDPETRO (Nifty: 0.54%)
- INDIANB
- LUPIN (Nifty: 0.46%)
- NATIONALUM
- NMDC
- SIEMENS
- STRIDE SHASUN

### Cash Segment



- 8KMILES
- ABCAPITAL
- AKSCHEM
- APLAPOLLO
- APOLLOPIPES
- ASAHISONG
- BOMBAY BURMAH
- BLS International
- BLUESTARCO
- CENTUM ELECTRONICS
- CITY UNION BK
- DAICHI
- EIDPARRY
- FUTURE CONSUMER
- FORBES & CO
- GABRIEL
- GARWARPOLY
- GOKALDAS EXPORTS
- GOODYEAR
- GREENPLY
- GUJBOROS
- HIKAL
- Hitech Co
- IGARASHI
- INDIANHUME
- INDIAN TERRAIN
- INEOSSTYRO
- IVP
- JAMNAAUTO
- KANORICHEM
- LAKSHMI ELECTRICAL
- MANALIPETC
- MANINDS
- MEGHMANI
- MINDACORP
- MINDAIND
- NATCOPHARM
- NDTV
- NESCO
- PHOENIXLTD
- PNBHOUSING
- PODDAR PIGMENTS
- Poddar Housing
- PRICOLLTD
- PUNJAB & SIND
- QUICKHEAL
- RATNAMANI
- RCF
- RENUKA
- SADBHIN
- SCHAND
- SELAN



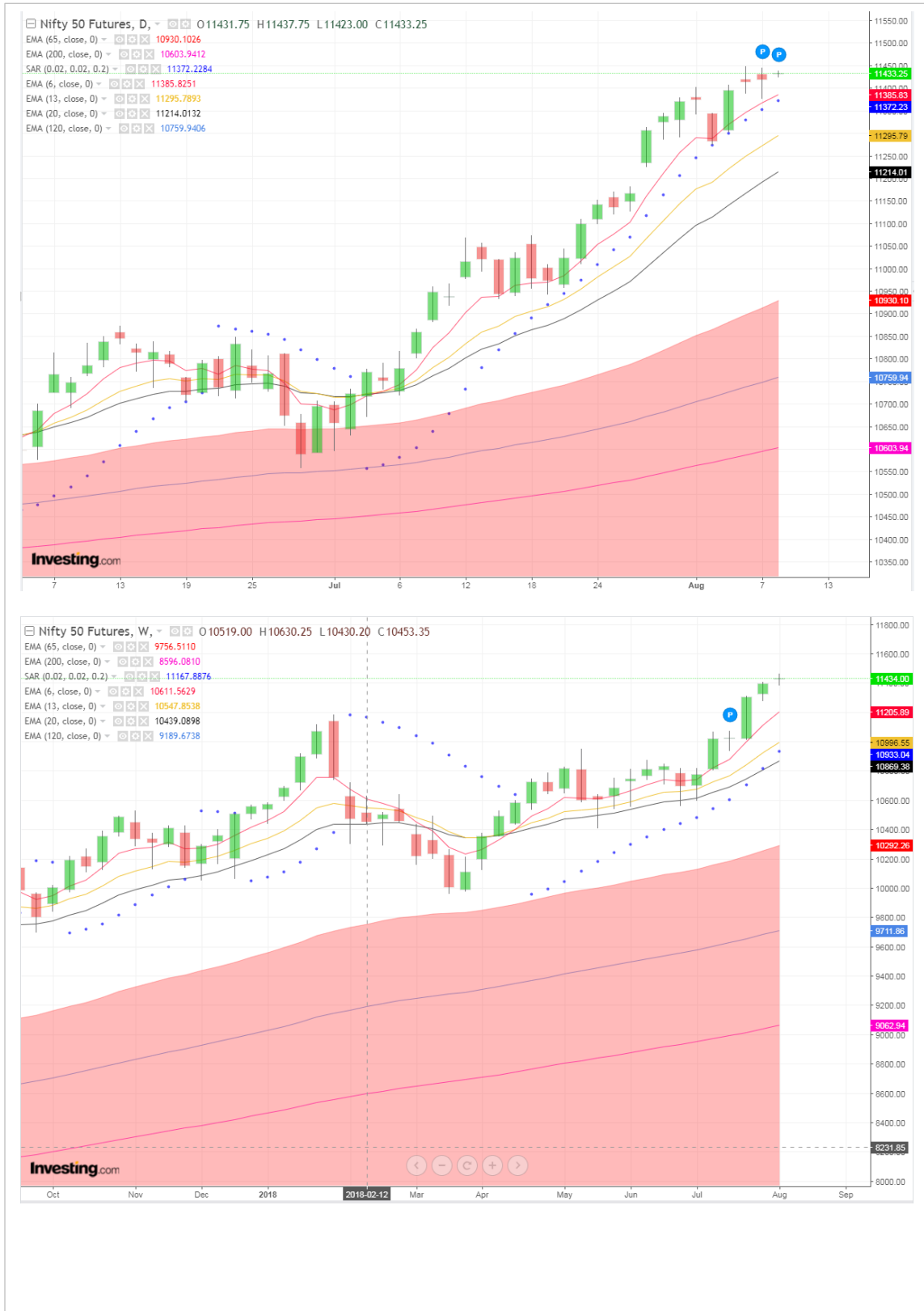
**Kantilal Chhaganlal**

Since 1954 | Trust Experience. Wealth Follows.  
WEALTH MANAGEMENT SOLUTION

# Morning Note | 8 August 2018

- STYLAM INDUSTRIES
- SUKHJITS
- SUNCLAYLTD
- Swelect Energy
- TASTY BITE
- T D POWER
- THEMIS MEDI
- THERMAX
- TRENT
- UFO

## SGX Nifty: Daily and Weekly Chart



## Contact Person Detail

**SURYA NARAYAN NAYAK**  
HEAD-Research & Sales  
Email-[surya.nayak@kcsecurities.com](mailto:surya.nayak@kcsecurities.com)  
Contact No-+9122 - 67236089

**KantilalChhaganlal Securities Pvt Ltd**  
Wilco Center, 'A' Wing, Near Garware House, 8,  
Subhash Road, Vile Parle (E), Mumbai 400 057 Tel  
No: +91 022-6723 6000/6001 Fax: +91 22 6723 6088

## Disclaimer

This is solely for information of clients of KantilalChhaganlal Securities and does not constitute to be an investment advice. It is also not intended as an offer or solicitation for the purchase and sale of any financial instruments. Any action taken by you on the basis of the information contained herein is your responsibility alone and KantilalChhaganlal Securities its subsidiaries or its employees or associates will not be liable in any manner for the consequences of such action taken by you. We have exercised due diligence in checking the correctness and authenticity of the information contained in this recommendation, but KantilalChhaganlal Securities or any of its subsidiaries or associates or employees shall not be in any way responsible for any loss or damage that may arise to any person from any inadvertent error in the information contained in this recommendation or any action taken on basis of this information. Technical analysis studies market psychology, price patterns and volume levels. It is used to forecast future price and market movements. Technical analysis is complementary to fundamental analysis and news sources. The recommendations issued herewith might be contrary to recommendations issued by KantilalChhaganlal Securities in the company research undertaken as the recommendations stated in this report is derived purely from technical analysis. KantilalChhaganlal Securities has based this document on information obtained from sources it believes to be reliable but which it has not independently verified; KantilalChhaganlal Securities makes no guarantee, representation or warranty and accepts no responsibility or liability as to its accuracy or completeness. The opinions contained within the report are based upon publicly available information at the time of publication and are subject to change without notice. The information and any disclosures provided herein are in summary form and have been prepared for informational purposes. The recommendations and suggested price levels are intended purely for trading purposes. The recommendations are valid for the day of the report however trading trends and volumes might vary substantially on an intraday basis and the recommendations may be subject to change. The information and any disclosures provided herein may be considered confidential. Any use, distribution, modification, copying, forwarding or disclosure by any person is strictly prohibited. The information and any disclosures provided herein do not constitute a solicitation or offer to purchase or sell any security or other financial product or instrument. The current performance may be unaudited. Past performance does not guarantee future returns. There can be no assurance that investments will achieve any targeted rates of return, and there is no guarantee against the loss of your entire investment. **POTENTIAL CONFLICT OF INTEREST DISCLOSURE** (as on date of report) Disclosure of interest statement – Analyst interest of the stock /Instrument(s): - No. Firm interest of the stock / Instrument (s): - No.