

Indian Market View

The much awaited listing of HDFC AMC with 67% jump on debut settled down and HDFC twins could not muster further mileage for broad gauge to scale still higher level, as market waits for set of poor corporate results in the second half of the result season. Hence a pause of the current rally is expected. Till writing this note, US indices futures and NIKKEI 225 were trading with mild gains of 0.15. However, Chinese shares are on recovery path gaining up 1%+. SGX Nifty (11434) was trading 0.12%/13 points. Oil prices are remaining sticky making higher high movements albeit with slow pace. Expect Nifty to turn weak after initial hour of flat trade to decline upto 11400 level. 2nd largest PSU bank, PNB's result could again spill bean on more bad assets, which would mar mild positive sentiment for the day.

Earnings to watch

F&O Segment

- ADANIEN
- M&M (NIFTY)
- MOTHERSUMI
- PNB
- PTC
- SRF
- TVSMOTOR

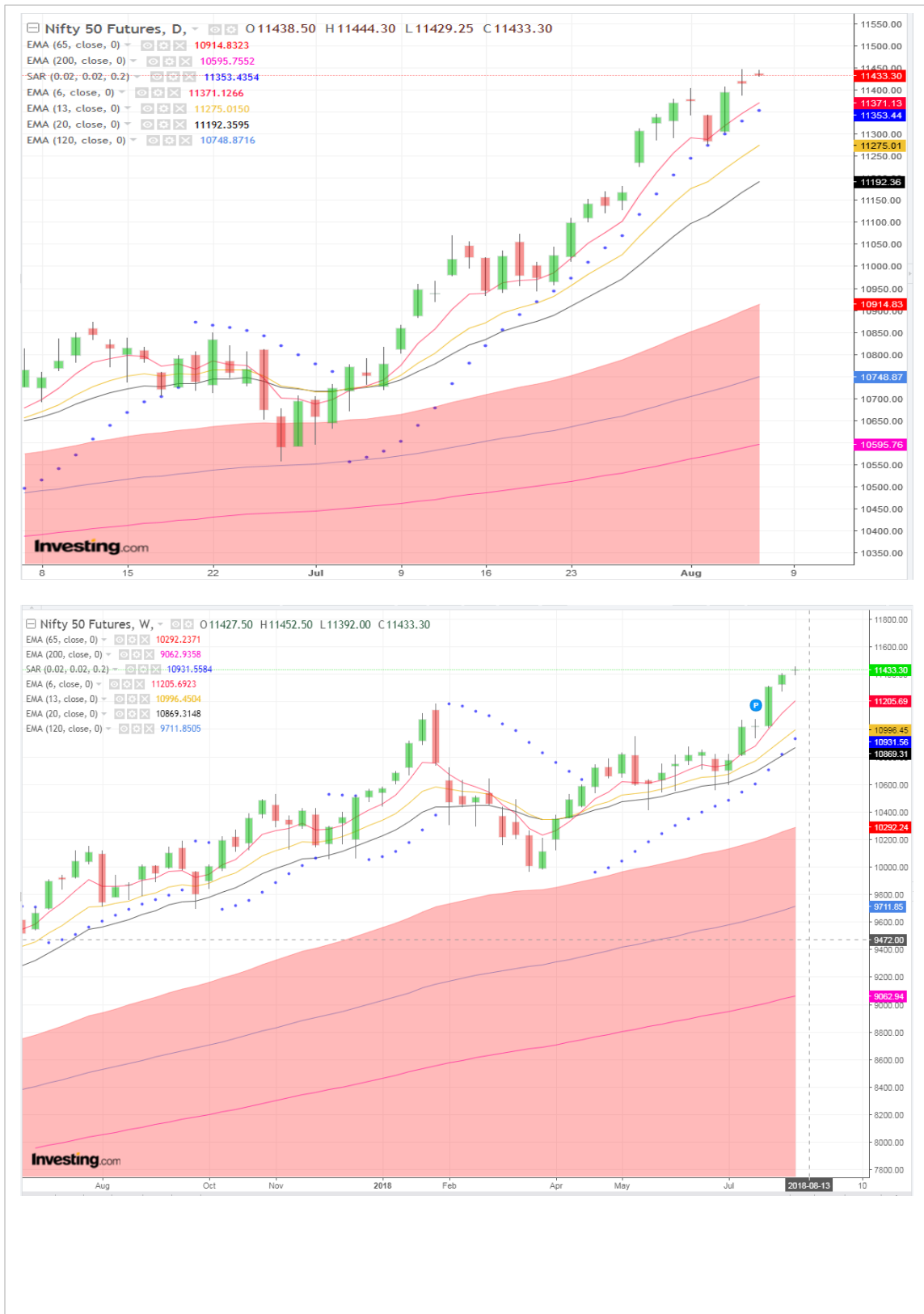
Cash Segment

- ADANITRANS
- ALEMBICLTD
- AMBER Enterprises
- ASAHI INDIA GLASS
- BIRLACORPN
- BOMDYEING
- BUTTERFLY
- ECLERX
- EDELWEISS
- Future Lifestyle
- Future Supply Chain
- GOODRICKE
- GSKCONS
- GULFOILLUB
- HAWKINCOOK
- ISGEC
- JK AGRI
- KALPATPOWR
- LOVABLE
- MERCK



- MIRZAINI
- MPHASIS
- NITINSPIN
- ORBTEXP
- PNCINFRA
- PONDYOXIDE
- RSWM
- SANGHIIND
- SHIVACEM
- SHREEPUSHK
- SOBHA
- SOMANYCERA
- SPIC
- THOMASCOOK
- TRANSPEK
- TRIDENT
- VOITHPAPR
- WONDERLA

SGX Nifty: Daily and Weekly Chart



Contact Person Detail

SURYA NARAYAN NAYAK
HEAD-Research & Sales
Email-surya.nayak@kcsecurities.com
Contact No-+9122 - 67236089

KantilalChhaganlal Securities Pvt Ltd
Wilco Center, 'A' Wing, Near Garware House, 8,
Subhash Road, Vile Parle (E), Mumbai 400 057 Tel
No: +91 022-6723 6000/6001 Fax: +91 22 6723 6088

Disclaimer

This is solely for information of clients of KantilalChhaganlal Securities and does not constitute to be an investment advice. It is also not intended as an offer or solicitation for the purchase and sale of any financial instruments. Any action taken by you on the basis of the information contained herein is your responsibility alone and KantilalChhaganlal Securities its subsidiaries or its employees or associates will not be liable in any manner for the consequences of such action taken by you. We have exercised due diligence in checking the correctness and authenticity of the information contained in this recommendation, but KantilalChhaganlal Securities or any of its subsidiaries or associates or employees shall not be in any way responsible for any loss or damage that may arise to any person from any inadvertent error in the information contained in this recommendation or any action taken on basis of this information. Technical analysis studies market psychology, price patterns and volume levels. It is used to forecast future price and market movements. Technical analysis is complementary to fundamental analysis and news sources. The recommendations issued herewith might be contrary to recommendations issued by KantilalChhaganlal Securities in the company research undertaken as the recommendations stated in this report is derived purely from technical analysis. KantilalChhaganlal Securities has based this document on information obtained from sources it believes to be reliable but which it has not independently verified; KantilalChhaganlal Securities makes no guarantee, representation or warranty and accepts no responsibility or liability as to its accuracy or completeness. The opinions contained within the report are based upon publicly available information at the time of publication and are subject to change without notice. The information and any disclosures provided herein are in summary form and have been prepared for informational purposes. The recommendations and suggested price levels are intended purely for trading purposes. The recommendations are valid for the day of the report however trading trends and volumes might vary substantially on an intraday basis and the recommendations may be subject to change. The information and any disclosures provided herein may be considered confidential. Any use, distribution, modification, copying, forwarding or disclosure by any person is strictly prohibited. The information and any disclosures provided herein do not constitute a solicitation or offer to purchase or sell any security or other financial product or instrument. The current performance may be unaudited. Past performance does not guarantee future returns. There can be no assurance that investments will achieve any targeted rates of return, and there is no guarantee against the loss of your entire investment. **POTENTIAL CONFLICT OF INTEREST DISCLOSURE** (as on date of report) Disclosure of interest statement – Analyst interest of the stock /Instrument(s): - No. Firm interest of the stock / Instrument (s): - No.