

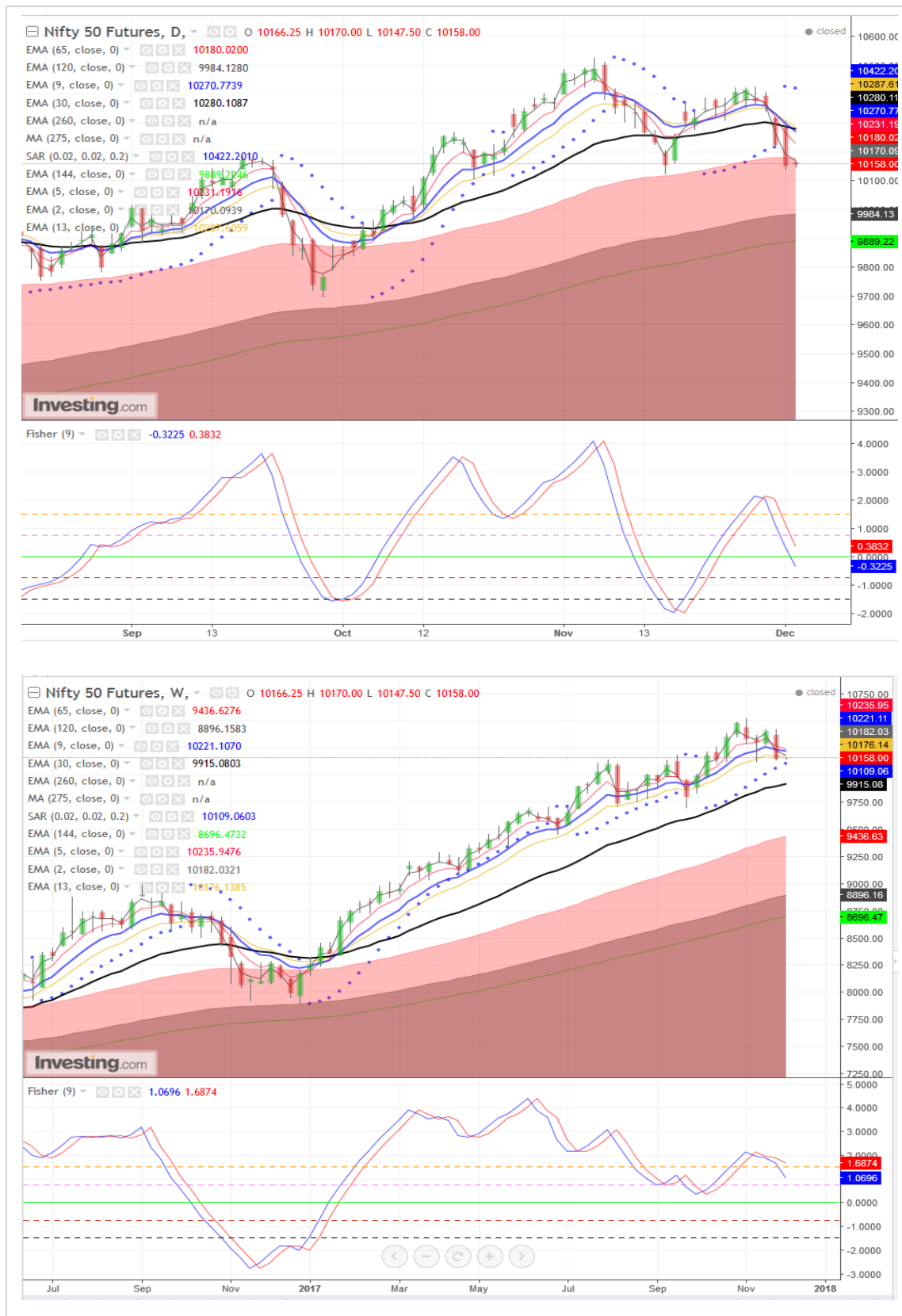
Indian Market

- **SGX NIFTY up 0.25% /25 points at 10169 (at 9:10 IST)**
- The Nifty fell 2.58 percent to end at a two-week low of 10,122 as bears managed to eke out gains on downside on belief that 2Q GDP print, which came in line snapping five quarters sequential fall, could again resume. Fiscal deficit which is now 96.10 percent of the budgeted target for the financial year due to lower revenue collection on GST procedural hitch, lower tax on many items and input tax credit- touching alarming level also created panic.
- However the PMI number and auto sales data negates such pessimism to a large extent. The Nikkei India PMI for November stood at 52.6 compared with 50.3 in October. It is the strongest improvement in business conditions in 13 months and comes on back of accelerated increase in output and new orders following the lowering of GST rates.
- Wall Street also facing headwinds due to ramifications of the ongoing Michael Flynn saga although President Trump could succeed in passing the tax bill, aiming at boosting corporate profits.
- **Expect NIFTY to trade in sideways to mild positive. PMI figure would keep the bulls active, although from policy rate view point no cuts are expected given rising crude oil price, which the market factored in already, it is believed. Crude's weakness after making a peak would aid positive sentiment.**

Market background

- The U.S. dollar bounced to a two-week top on Monday and S&P futures rallied as traders marked the passage of a Senate tax bill over the weekend, a move that raises the risk of more aggressive rate hikes in the world's largest economy.
- Asia market ex-Japan is trading with mild gains. NIKKEI 225 was flat to negative on dollar's rise (-0.08%) so as ASX 200 just flat +0.06%. HANG SENG gained 0.78% so as China-A50 rose 0.93% and KOSPI 200 was in positive zone +0.57%. All US key indices futures were trading with gains upto 1%.
- WTI lost 0.74% at \$57.93 per barrel. Brent crude future was also trending down 0.46% at \$63.33 per barrel.

SGX Nifty: Daily and Weekly Chart



Pivot Table: Bank Nifty, Nifty & its constituents Futures (Week: 04 -08 Dec 2017)

S3	S2	S1	Scrp	CMO 15	CMO 5	Lot Size	Wkly Chg	ST Trend	Pivot	R1	R2	R3
9921.7	10029.9	10092.1	NIFTY	15.2	-30.5	75	-255.1	-ve	10200.3	10262.5	10370.7	10432.9
24805.3	25008.3	25134.0	BANKNIFTY	19.4	15.5	40	-582.8	-ve	25337.0	25462.7	25665.7	25791.4
352.2	368.3	378.4	ADANIPTS	0.3	-82.1	2500	-17.2	-ve	394.4	404.5	420.6	430.7
256.5	259.9	262.1	AMBUJACEM	-12.6	-48.6	2500	-1.4	-ve	265.5	267.7	271.1	273.3
1109.8	1123.5	1131.9	ASIANPAINT	-0.7	-84.3	600	-23.0	-ve	1145.6	1154.1	1167.8	1176.2
627.4	649.2	662.3	AUROPHARMA	-8.2	-56.8	800	-41.0	-ve	684.1	697.2	719.0	732.1
524.6	529.7	533.1	AXISBANK	16.8	65.9	1200	-9.6	-ve	538.2	541.6	546.7	550.1
3054.6	3137.4	3184.3	BAJAJ-AUTO	43.1	-29.3	250	-67.7	-ve	3267.2	3314.1	3396.9	3443.8
1662.1	1686.6	1701.4	BAJFINANCE	0.6	-48.3	500	-74.0	-ve	1725.9	1740.7	1765.2	1780.0
463.1	473.1	479.1	BHARTIARTL	22.0	-3.4	1700	-13.0	-ve	489.1	495.1	505.1	511.1
17971.1	18985.6	19521.1	BOSCHLTD	-27.8	-39.3	25	1042.2	+ve	20535.6	21071.1	22085.6	22621.1
481.5	488.8	493.4	BPCL	-3.1	-47.0	1800	-11.6	-ve	500.6	505.2	512.5	517.1
582.1	589.3	594.6	CIPLA	18.2	-35.8	1000	-16.1	-ve	601.8	607.1	614.3	619.6
262.6	266.2	268.6	COALINDIA	30.9	-100.0	1700	-0.4	-ve	272.1	274.5	278.1	280.5
2154.1	2193.1	2218.1	DRREDDY	24.7	-76.6	200	-56.5	-ve	2257.1	2282.1	2321.1	2346.1
27914.1	28635.1	29043.0	EICHERMOT	-26.4	-85.0	25	-1388.3	-ve	29764.0	30172.0	30893.0	31300.9
420.3	434.2	443.7	GAIL	36.8	-22.4	2000	-16.6	-ve	457.6	467.1	481.0	490.5
802.8	817.2	825.8	HCLTECH	-16.1	-27.0	700	-24.7	-ve	840.2	848.8	863.2	871.8
1614.2	1635.9	1651.1	HDFC	-19.6	-20.8	500	-48.1	-ve	1672.8	1688.1	1709.8	1725.0
1824.1	1833.7	1840.3	HDFCBANK	29.6	51.8	500	-10.5	-ve	1849.8	1856.4	1866.0	1872.6
3342.5	3426.6	3520.9	HEROMOTOCO	-35.0	-71.9	200	-46.3	-ve	3605.0	3699.3	3783.4	3877.7
224.8	229.8	233.1	HINDALCO	4.9	-100.0	3500	-16.0	-ve	238.1	241.4	246.4	249.7
390.3	399.2	404.8	HINDPETRO	-16.1	-62.9	1575	-20.7	-ve	413.7	419.3	428.2	433.8
1220.9	1237.0	1247.4	HINDUNILVR	16.6	-3.4	600	-12.0	-ve	1263.5	1274.0	1290.1	1300.5
1030.8	1085.5	1118.1	IBULHSGFIN	-10.1	-99.7	400	-22.8	-ve	1172.8	1205.5	1260.2	1292.8
298.9	302.3	304.6	ICICIBANK	9.9	9.4	2750	-11.3	-ve	308.0	310.3	313.7	316.0
1606.9	1625.7	1640.7	INDUSINDBK	7.8	15.7	300	-16.5	-ve	1659.6	1674.6	1693.4	1708.4
378.7	381.4	384.0	INFRATEL	-4.1	-54.3	1700	4.9	+ve	386.7	389.3	392.0	394.6
922.8	940.6	950.5	INFY	12.7	24.9	500	-48.6	-ve	968.2	978.1	995.9	1005.8
380.1	384.1	386.4	IOC	-31.1	-67.6	1500	-7.6	-ve	390.4	392.6	396.6	398.9
250.2	253.3	254.9	ITC	-43.6	-72.3	2400	-4.3	-ve	258.0	259.6	262.7	264.3
994.6	999.7	1005.3	KOTAKBANK	8.3	-23.8	800	-23.0	-ve	1010.4	1015.9	1021.0	1026.6
1169.3	1189.5	1201.6	LT	22.7	-19.4	750	-5.0	-ve	1221.8	1233.9	1254.1	1266.2
797.7	805.3	811.6	LUPIN	-23.9	-66.5	400	-13.6	-ve	819.2	825.5	833.1	839.4
1376.3	1391.2	1400.1	M&M	8.1	8.5	500	-26.5	-ve	1415.0	1424.0	1438.9	1447.8
8475.7	8542.8	8585.5	MARUTI	55.5	84.7	75	116.4	+ve	8652.7	8695.4	8762.5	8805.2
177.1	179.1	180.5	NTPC	19.8	-8.8	4000	1.0	-ve	182.5	183.8	185.8	187.2
174.9	177.4	178.9	ONGC	30.2	-4.9	3750	-1.0	+ve	181.4	183.0	185.5	187.0
197.7	200.6	202.4	POWERGRID	-46.9	-64.4	4000	-6.9	-ve	205.3	207.0	209.9	211.7
882.3	897.1	905.6	RELIANCE	27.5	-12.9	1000	-38.6	-ve	920.4	928.9	943.7	952.2
297.1	305.0	309.6	SBIN	20.9	2.2	3000	-19.1	-ve	317.5	322.1	330.0	334.6
497.4	511.5	520.2	SUNPHARMA	23.7	-28.5	800	-21.3	-ve	534.3	542.9	557.0	565.7
378.9	388.3	394.1	TATAMOTORS	10.8	-46.1	1500	-26.1	-ve	403.4	409.2	418.6	424.4
650.1	664.2	673.1	TATASTEEL	23.3	-78.6	1000	-26.5	-ve	687.3	696.2	710.3	719.2
2583.4	2609.2	2626.8	TCS	25.1	25.7	250	-52.4	-ve	2652.6	2670.2	2696.0	2713.6
443.3	457.4	465.9	TECHM	27.3	-7.3	1100	-20.9	-ve	480.0	488.5	502.6	511.1
4065.6	4118.8	4154.8	ULTRACEMCO	10.4	-68.9	200	-50.1	-ve	4208.0	4243.9	4297.1	4333.1
269.3	278.2	283.2	VEDL	-7.9	-98.7	1750	-18.6	-ve	292.0	297.0	305.9	310.9
280.0	283.8	285.9	WIPRO	0.3	-35.3	2400	-4.9	-ve	289.7	291.9	295.7	297.8
300.5	303.3	305.5	YESBANK	-21.2	-3.3	1750	-5.3	-ve	308.3	310.5	313.3	315.5
707.8	717.9	724.6	UPL	-36.7	-73.0	1200	-14.3	-ve	734.7	741.5	751.6	758.3
528.3	543.4	551.8	ZEEL	25.8	38.4	1300	-5.2	+ve	566.9	575.4	590.5	598.9

Pivot Table: Next Nifty stocks (Week: 04 - 08 Dec 2017)

S3	S2	S1	Scrp	CMO 15	CMO 5	Lot Size	Wkly Chg	ST Trend	Pivot	R1	R2	R3
1633.6	1654.4	1667.2	ACC	-20.1	-71.4	400	-21.8	-ve	1688.0	1700.7	1721.5	1734.3
115.5	117.8	119.3	ASHOKLEY	29.0	-32.9	7000	2.4	+ve	121.6	123.1	125.4	126.9
4756.3	4909.1	5005.7	BAJAJFINSV	-14.7	18.0	125	-58.7	-ve	5158.5	5255.0	5407.8	5504.4
155.9	160.6	164.2	BANKBARODA	17.8	-22.9	3500	-9.5	-ve	168.9	172.5	177.2	180.8
176.1	179.9	182.2	BEL	31.4	51.7	4950	-0.6	+ve	186.0	188.2	192.0	194.3
87.6	89.3	90.3	BHEL	10.6	-19.7	7500	-1.2	+ve	92.0	93.1	94.8	95.8
4625.9	4687.0	4737.6	BRITANNIA	48.8	39.7	200	33.9	+ve	4798.7	4849.3	4910.4	4961.0
413.7	419.9	424.1	CADILAHC	-22.9	-87.0	1600	-18.8	-ve	430.3	434.4	440.6	444.8
996.4	1010.7	1019.3	COLPAL	-13.8	-53.3	700	-27.3	-ve	1033.6	1042.2	1056.5	1065.1
1218.2	1248.6	1266.2	CONCOR	6.3	-80.3	625	-66.1	-ve	1296.6	1314.1	1344.5	1362.1
789.1	815.4	830.7	CUMMINSIND	-20.9	-90.7	600	-18.1	-ve	857.0	872.3	898.6	913.9
332.3	336.4	339.3	DABUR	32.8	54.8	2500	-2.4	-ve	343.4	346.3	350.4	353.3
1002.1	1018.7	1029.7	DIVISLAB	54.6	65.3	800	-8.5	-ve	1046.3	1057.3	1073.9	1084.9
204.6	213.6	220.0	DLF	39.0	73.4	5000	-1.8	+ve	229.0	235.3	244.3	250.7
533.3	544.2	550.2	GLENMARK	-20.9	-55.4	700	-38.0	-ve	561.0	567.0	577.9	583.9
941.0	956.0	967.5	GODREJCP	21.4	45.0	800	6.6	+ve	982.5	994.0	1009.0	1020.5
491.1	498.9	503.9	HAVELLS	13.1	52.3	2000	-10.6	-ve	511.7	516.8	524.6	529.6
286.9	291.6	294.4	HINDZINC	1.7	-57.7	3200	-12.5	-ve	299.1	301.9	306.6	309.4
352.6	360.7	365.4	ICICIPRULI	-34.8	-45.0	1300	-8.9	-ve	373.5	378.3	386.4	391.1
90.4	91.7	92.6	IDEA	4.4	0.4	7000	-1.3	-ve	94.0	94.9	96.2	97.1
1096.2	1112.6	1123.2	INDIGO	-23.1	-41.9	600	-46.4	-ve	1139.6	1150.2	1166.6	1177.2
239.1	244.3	248.6	JSWSTEEL	14.2	-55.3	3000	-12.8	-ve	253.8	258.2	263.4	267.7
541.0	555.6	564.3	LICHSGFIN	-33.9	-55.6	1100	-25.9	-ve	578.9	587.6	602.2	610.9
297.5	301.5	306.2	MARICO	-19.1	-22.9	2600	1.3	+ve	310.2	314.9	318.9	323.6
2999.8	3095.9	3156.4	MCDOWELL-N	39.6	40.6	250	-49.9	-ve	3252.5	3313.0	3409.1	3469.6
343.7	350.9	355.2	MOTHERSUMI	28.8	-1.9	3750	12.8	+ve	362.4	366.7	373.9	378.2
26.9	27.4	27.7	NHPC	-25.4	-20.6	27000	0.9	+ve	28.2	28.5	29.0	29.3
122.7	125.4	127.4	NMDC	15.6	4.0	6000	2.1	+ve	130.2	132.2	134.9	136.9
3598.7	3648.6	3680.1	OFSS	44.3	81.0	150	-12.1	+ve	3730.1	3761.6	3811.5	3843.0
350.0	354.4	358.0	OIL	58.2	36.1	2266	-5.7	+ve	362.4	365.9	370.3	373.9
2560.9	2640.2	2688.3	PEL	3.0	3.0	300	73.1	+ve	2767.6	2815.7	2895.0	2943.1
230.3	236.5	240.5	PETRONET	17.8	-53.1	3000	-9.2	-ve	246.6	250.6	256.8	260.8
113.7	116.4	118.1	PFC	-5.5	-94.1	6000	-7.8	-ve	120.9	122.6	125.3	127.0
829.3	836.1	845.9	PIDILITIND	18.2	64.3	1000	12.6	+ve	852.7	862.5	869.3	879.1
161.3	166.2	169.3	PNB	18.2	-47.1	3500	-14.2	-ve	174.2	177.4	182.3	185.4
149.0	151.2	152.6	RECLTD	-13.7	-50.5	6000	-9.5	-ve	154.8	156.2	158.4	159.8
74.1	76.2	77.4	SAIL	30.4	-6.0	12000	-4.0	-ve	79.5	80.8	82.9	84.1
16878.4	17041.7	17151.3	SHRECEM	-1.5	-75.8	50	142.0	+ve	17314.6	17424.3	17587.6	17697.2
1122.8	1149.1	1163.7	SIEMENS	-21.4	-100.0	500	-14.1	-ve	1190.0	1204.6	1230.9	1245.5
1268.4	1295.2	1312.3	SRTRANSFIN	47.2	46.4	600	88.0	+ve	1339.1	1356.2	1383.0	1400.1
793.1	820.1	838.5	SUNTV	27.5	5.2	1000	-21.3	-ve	865.5	884.0	911.0	929.4
771.3	787.4	798.4	TITAN	43.3	84.0	1500	-20.6	-ve	814.5	825.5	841.6	852.6
217.8	223.1	226.3	TATAMTRDVR	2.1	-33.6	2100	-11.4	-ve	231.7	234.9	240.2	243.4
82.4	86.3	88.5	TATAPOWER	22.7	28.8	9000	-3.3	-ve	92.4	94.6	98.5	100.7
1237.9	1255.1	1266.6	TORNTPHARM	0.7	3.7	400	-2.2	+ve	1283.8	1295.3	1312.5	1324.0
999.2	1027.1	1045.2	UBL	52.6	33.6	700	-25.2	-ve	1073.1	1091.2	1119.1	1137.2

Pivot Table: Other stock futures above Rs 400 (Week: 04 - 08 Dec 2017)

S3	S2	S1	Scrp	CMO 15	CMO 5	Lot Size	Wkly Chg	ST Trend	Pivot	R1	R2	R3
1233.6	1278.4	1310.5	AJANTPHARM	29.2	67.5	400	9.2	+ve	1355.2	1387.3	1432.1	1464.2
713.5	741.3	759.7	AMARAJABAT	-7.1	67.4	600	-12.3	-ve	787.5	805.9	833.7	852.1
1089.1	1104.2	1119.4	APOLLOHOSP	15.7	60.4	500	0.5	+ve	1134.5	1149.7	1164.8	1180.0
416.5	425.7	431.2	ARVIND	31.8	47.3	2000	1.6	+ve	440.3	445.8	455.0	460.5
1941.7	2013.3	2058.7	BALKRISIND	72.1	94.8	400	24.8	-ve	2130.4	2175.8	2247.4	2292.8
702.4	715.6	723.5	BATAINDIA	16.2	-43.6	1100	-9.8	-ve	736.7	744.7	757.9	765.8
1556.2	1595.8	1620.6	BEML	-26.1	-27.2	300	-37.4	-ve	1660.2	1685.0	1724.6	1749.4
953.3	964.8	972.6	BHARATFIN	37.7	4.1	1000	-11.1	-ve	984.0	991.8	1003.3	1011.1
654.2	668.3	677.6	BHARATFORG	35.2	20.8	1200	-13.8	-ve	691.8	701.1	715.2	724.5
428.5	433.9	441.3	BIOCON	52.4	75.5	1800	33.5	+ve	446.7	454.1	459.5	466.9
429.7	447.6	457.9	CANFINHOME	-43.5	-37.6	1250	8.5	+ve	475.8	486.2	504.1	514.4
668.7	681.2	689.7	CAPF	-10.2	-17.8	800	-8.5	-ve	702.2	710.7	723.2	731.7
388.1	393.7	397.6	CASTROLIND	9.9	-4.6	1400	6.3	+ve	403.3	407.2	412.8	416.7
1643.8	1692.4	1720.3	CEATLTD	7.6	26.4	350	-75.6	-ve	1768.9	1796.8	1845.4	1873.3
1241.8	1267.9	1283.9	CENTURYTEX	20.8	-25.9	550	-36.8	-ve	1310.0	1326.0	1352.1	1368.1
956.5	975.8	986.9	CESC	17.9	-34.7	550	-14.4	-ve	1006.2	1017.3	1036.6	1047.7
387.8	400.0	407.1	CHENNPETRO	5.7	-39.3	1500	-16.8	-ve	419.4	426.5	438.7	445.8
1239.4	1259.9	1273.9	CHOLAFIN	37.5	95.3	500	14.3	-ve	1294.5	1308.5	1329.0	1343.0
3029.0	3062.5	3100.7	DALMIABHA	34.4	40.0	300	83.7	+ve	3134.3	3172.5	3206.0	3244.2
549.8	575.0	588.3	DHFL	43.0	-11.5	1500	-17.8	-ve	613.5	626.9	652.1	665.4
623.4	656.2	673.9	ESCORTS	22.9	-82.2	1100	5.8	-ve	706.7	724.4	757.2	774.9
967.4	982.9	991.9	GODFRYPHLP	-36.3	-16.6	500	-16.6	-ve	1007.5	1016.5	1032.0	1041.0
531.0	548.1	558.3	GODREJIND	-15.0	-45.2	1500	4.3	+ve	575.4	585.6	602.7	612.9
1110.2	1130.2	1143.1	GRASIM	9.5	-14.8	750	-49.3	-ve	1163.1	1176.0	1196.0	1208.9
604.5	627.8	642.7	JETAIRWAYS	19.4	62.3	1200	2.7	-ve	666.0	681.0	704.3	719.2
1704.4	1730.2	1747.2	JUBLFOOD	58.5	54.7	500	-42.7	-ve	1773.0	1789.9	1815.7	1832.7
468.3	487.7	499.9	JUSTDIAL	47.8	53.5	1200	-22.8	-ve	519.3	531.5	550.9	563.1
697.6	708.9	715.8	KAJARIACER	29.4	43.3	800	-7.2	-ve	727.1	734.1	745.4	752.3
507.8	522.2	530.4	KSCL	-8.1	-46.5	1500	-23.5	-ve	544.8	552.9	567.3	575.5
411.9	426.5	434.8	M&MFIN	16.0	29.2	1250	-5.3	+ve	449.4	457.7	472.3	480.6
932.9	945.9	955.8	MCX	-14.5	-78.7	500	14.6	+ve	968.8	978.8	991.8	1001.7
532.9	539.8	544.1	MFSL	-24.0	-16.5	1000	-15.3	-ve	551.1	555.4	562.3	566.6
1039.4	1064.1	1079.8	MGL	9.7	-46.7	600	-10.8	+ve	1104.5	1120.2	1144.9	1160.6
503.2	516.6	524.3	MINDTREE	37.1	88.0	1200	18.6	+ve	537.7	545.4	558.8	566.5
61588.2	63827.5	65101.3	MRF	13.0	13.4	15	-3138.3	-ve	67340.6	68614.3	70853.6	72127.4
422.0	430.3	436.1	MUTHOOTFIN	-10.1	-55.9	1500	-10.6	-ve	444.4	450.2	458.5	464.3
7562.8	7625.7	7669.1	NESTLEIND	42.9	46.3	100	189.6	+ve	7732.1	7775.5	7838.4	7881.8
607.3	619.8	626.9	NIITTECH	44.8	-13.4	1500	-27.1	-ve	639.4	646.4	658.9	666.0
20634.6	21221.4	21575.4	PAGEIND	50.1	40.2	50	-722.7	-ve	22162.2	22516.1	23102.9	23456.9
1199.4	1238.7	1263.4	PVR	-4.6	-63.2	400	-17.0	-ve	1302.7	1327.4	1366.7	1391.4
669.1	681.0	688.1	RAMCOCEM	2.9	-28.9	800	-16.0	-ve	700.0	707.1	719.0	726.1
892.7	918.3	932.7	RAYMOND	33.0	24.9	800	-33.5	-ve	958.3	972.7	998.3	1012.7
503.9	512.0	516.9	RBLBANK	0.0	-19.3	1000	7.8	+ve	525.0	529.9	538.0	542.9
388.3	403.7	413.8	RELCAPITAL	-41.2	-72.3	750	-29.7	-ve	429.2	439.3	454.7	464.8
418.5	427.3	432.4	RELINFRA	-18.2	-72.8	1300	-14.8	-ve	441.2	446.3	455.1	460.2
575.1	592.5	602.8	REPCOHOME	-20.3	8.7	700	-17.4	-ve	620.3	630.6	648.0	658.3
1766.9	1796.9	1814.8	SRF	49.0	81.9	500	-18.6	+ve	1844.9	1862.8	1892.8	1910.7
772.5	785.6	794.8	STAR	-24.8	-40.0	500	-19.4	-ve	807.9	817.1	830.2	839.4
679.2	695.6	705.1	TATACHEM	40.3	-44.1	1500	-27.3	-ve	721.5	731.0	747.4	756.9
656.1	667.7	674.8	TATACOMM	13.2	33.0	700	-12.5	-ve	686.4	693.5	705.1	712.2
859.1	887.2	904.8	TATAELXSI	18.0	49.2	800	-31.9	-ve	932.9	950.6	978.7	996.3
711.9	717.7	721.8	TVSMOTOR	60.0	22.7	1000	-13.2	-ve	727.7	731.8	737.6	741.7
583.0	599.1	609.2	VOLTAS	39.6	86.8	1000	-5.5	-ve	625.2	635.3	651.4	661.5
643.1	669.9	687.2	WOCKPHARMA	54.4	61.6	800	-5.4	-ve	714.0	731.3	758.1	775.4

Pivot Table: Other stock futures between Rs 100-400 (Week: 04 - 08 Dec 2017)

S3	S2	S1	Scrip	CMO 15	CMO 5	Lot Size	Wkly Chg	ST Trend	Pivot	R1	R2	R3
126.5	133.5	138.0	ADANIENT	24.9	28.8	4000	-11.2	-ve	145.0	149.5	156.5	161.0
228.1	236.1	240.4	APOLLTYRE	-33.3	-0.3	3000	-9.1	-ve	248.4	252.7	260.7	265.0
149.1	153.1	155.3	BALRAMCHIN	-17.3	-18.2	3500	-6.3	-ve	159.2	161.4	165.4	167.6
169.9	178.1	182.7	BANKINDIA	28.9	11.5	6000	-13.8	-ve	190.9	195.5	203.7	208.3
243.6	248.4	251.9	BERGEPAIN	13.0	-70.2	2200	-0.8	+ve	256.6	260.1	264.9	268.4
340.3	351.3	357.8	CANBK	12.4	-92.5	3084	-27.5	-ve	368.8	375.3	386.3	392.8
175.4	178.4	180.2	DCBBANK	-2.7	12.2	4500	-5.3	-ve	183.2	185.1	188.1	189.9
166.0	173.2	177.4	ENGINEERSIN	35.8	-0.7	3500	-2.5	-ve	184.6	188.9	196.1	200.3
125.8	133.0	137.0	EQUITAS	-26.3	-20.2	3200	-5.5	-ve	144.1	148.1	155.3	159.3
196.8	200.5	202.9	EXIDEIND	-7.5	14.0	4000	-1.5	+ve	206.6	209.0	212.7	215.1
103.5	105.9	107.3	FEDERALBNK	-0.2	-100.0	5500	-3.6	-ve	109.8	111.2	113.6	115.0
132.8	137.8	141.0	FORTIS	-1.5	-10.1	2700	5.5	+ve	146.0	149.2	154.2	157.4
113.8	118.8	121.7	GRANULES	-3.0	-47.0	5000	-0.8	-ve	126.7	129.6	134.6	137.5
129.6	133.5	135.7	GSFC	1.3	-45.8	4500	-5.7	-ve	139.6	141.8	145.7	147.9
327.8	333.1	336.8	HEXAWARE	51.4	65.3	3000	14.3	+ve	342.1	345.8	351.1	354.8
103.6	108.6	111.4	ICIL	-0.3	-13.6	3500	-14.5	-ve	116.5	119.3	124.3	127.1
297.3	306.3	312.1	IGL	50.0	-4.8	2750	4.4	+ve	321.1	326.9	335.9	341.7
158.2	163.1	165.9	INDIACEM	-12.0	-68.5	3500	-7.1	-ve	170.8	173.6	178.5	181.3
372.9	381.9	387.3	INDIANB	32.3	66.1	2000	-20.1	-ve	396.3	401.7	410.7	416.1
152.9	158.9	162.5	INFIBEAM	24.4	54.9	4000	-10.1	-ve	168.5	172.0	178.0	181.6
208.9	215.6	219.4	IRB	10.8	-33.3	2500	-9.8	-ve	226.1	229.9	236.6	240.4
151.1	158.5	163.6	JINDALSTEL	38.9	13.3	4500	-4.1	-ve	170.9	176.0	183.4	188.5
110.3	114.3	116.7	JISLJALEQS	24.4	38.3	9000	5.6	+ve	120.7	123.1	127.1	129.5
142.7	151.4	156.5	KPIT	48.9	45.9	4000	-14.6	-ve	165.2	170.3	179.0	184.1
146.2	149.4	151.4	KTKBANK	7.2	-16.1	3800	-6.2	-ve	154.6	156.6	159.8	161.8
156.4	161.7	164.9	L&TFH	-8.5	-86.9	4500	-10.1	-ve	170.2	173.5	178.8	182.0
93.6	97.4	99.7	MANAPPURAM	23.4	17.1	6000	-5.1	-ve	103.5	105.8	109.6	111.9
120.3	121.8	122.9	MRPL	-1.9	-47.7	4500	-2.4	-ve	124.5	125.6	127.1	128.2
248.4	254.1	257.8	NBCC	57.6	13.4	3000	-4.3	-ve	263.4	267.1	272.8	276.5
114.1	117.5	119.6	NCC	51.1	52.4	8000	10.4	+ve	123.0	125.1	128.5	130.6
117.2	120.5	122.5	ORIENTBANK	1.1	-41.3	6000	-7.3	-ve	125.8	127.8	131.1	133.1
362.9	376.8	385.6	PCJEWELLER	10.6	61.5	1500	9.8	+ve	399.5	408.3	422.2	431.0
111.1	113.1	114.2	PTC	1.8	-45.4	8000	-6.1	-ve	116.2	117.3	119.3	120.4
93.0	96.4	98.6	SREINFRA	-29.8	-66.5	5000	-2.6	-ve	102.0	104.2	107.6	109.8
269.4	276.3	280.5	TATAGLOBAL	72.8	100.0	4500	5.1	+ve	287.4	291.6	298.5	302.7
258.4	266.5	271.4	TORNTPOWER	51.9	13.8	3000	3.9	+ve	279.5	284.4	292.5	297.4
338.9	355.5	366.2	UJJIVAN	19.9	39.4	1200	-38.2	-ve	382.8	393.4	410.0	420.7
147.4	152.5	155.4	UNIONBANK	23.1	-73.5	4000	-9.3	-ve	160.5	163.5	168.6	171.5
215.1	220.4	223.4	VGUARD	40.1	25.8	3000	-12.4	-ve	228.7	231.7	237.0	240.0

Pivot Table: Other stock futures below Rs 100 (Week: 04-08 Dec 2017)

S3	S2	S1	Scrip	CMO 15	CMO 5	Lot Size	Wkly Chg	ST Trend	Pivot	R1	R2	R3
30.3	32.1	33.2	ADANIPOWER	25.8	26.9	20000	-1.3	-ve	35.0	36.0	37.8	38.9
70.1	72.3	73.6	ALBK	18.1	-29.2	10000	-4.0	-ve	75.8	77.1	79.3	80.6
58.0	59.5	60.5	ANDHRABANK	23.8	-45.8	10000	-4.3	-ve	62.1	63.1	64.6	65.6
77.1	80.3	82.4	CGPOWER	8.0	22.8	12000	-1.1	-ve	85.6	87.7	90.9	93.0
74.3	77.3	79.0	DISHTV	6.5	21.7	7000	-1.5	+ve	81.9	83.6	86.6	88.3
16.1	16.8	17.3	GMRINFRA	-4.1	-7.0	45000	-0.9	-ve	18.0	18.5	19.2	19.7
35.2	36.3	37.0	HCC	9.8	-57.6	12000	0.2	-ve	38.1	38.7	39.8	40.5
54.1	56.8	58.4	HDIL	0.2	24.2	8000	-2.6	-ve	61.1	62.6	65.3	66.9
56.5	58.0	58.9	IDBI	16.2	-24.1	8000	-2.3	-ve	60.4	61.3	62.8	63.7
56.9	58.8	59.9	IDFC	20.6	-100.0	13200	-0.2	-ve	61.8	62.9	64.8	65.9
53.1	53.9	54.3	IDFCBANK	-4.6	-41.7	9000	-0.1	-ve	55.1	55.5	56.3	56.7
22.8	23.5	23.9	IFCI	12.9	-34.5	22000	-0.4	-ve	24.6	25.0	25.7	26.1
110.3	114.3	116.7	JISLJLEQS	24.4	38.3	9000	5.6	+ve	120.7	123.1	127.1	129.5
16.5	17.1	17.5	JPASSOCIAT	-36.8	-40.0	34000	-1.1	-ve	18.1	18.5	19.1	19.5
75.6	79.6	81.9	JSWENERGY	43.6	-19.9	8500	0.2	+ve	85.9	88.1	92.1	94.4
93.6	97.4	99.7	MANAPPURAM	23.4	17.1	6000	-5.1	-ve	103.5	105.8	109.6	111.9
76.4	78.5	79.8	NATIONALUM	22.0	-66.0	8000	-0.8	-ve	81.8	83.1	85.2	86.5
11.2	11.7	12.1	RCOM	-67.2	-44.2	14000	-1.2	-ve	12.6	13.0	13.5	13.9
37.4	38.1	38.6	RNAVAL	-33.5	-59.5	9000	-5.1	-ve	39.3	39.8	40.5	41.0
35.8	36.6	37.1	RPOWER	-14.7	-45.8	12000	-0.9	-ve	37.9	38.4	39.2	39.7
29.4	30.5	31.2	SOUTHBANK	30.9	18.8	33141	0.3	+ve	32.3	33.0	34.1	34.8
12.7	13.2	13.5	SUZLON	-36.4	-53.5	30000	-0.4	-ve	14.0	14.3	14.8	15.1
76.9	81.9	84.9	SYNDIBANK	42.0	42.5	9000	-6.8	-ve	89.9	92.8	97.8	100.8
48.9	51.7	53.3	TV18BRDCST	61.1	83.4	17000	4.4	+ve	56.2	57.8	60.6	62.2

Contact Person Detail

SURYA NARAYAN NAYAK
HEAD - Research & Sales
Email - surya.nayak@kcsecurities.com
Contact No - +9122 - 67236089

Kantilal Chhaganlal Securities Pvt Ltd
Vilco Center, 'A' Wing, Near Garware House, 8,
Subhash Road, Ville Parle (E), Mumbai 400 057 Tel
No: +91 022-6723 6000/6001 Fax: +91 22 6723 6088

Disclaimer

This is solely for information of clients of Kantilal Chhaganlal Securities and does not construe to be an investment advice. It is also not intended as an offer or solicitation for the purchase and sale of any financial instruments. Any action taken by you on the basis of the information contained herein is your responsibility alone and Kantilal Chhaganlal Securities its subsidiaries or its employees or associates will not be liable in any manner for the consequences of such action taken by you. We have exercised due diligence in checking the correctness and authenticity of the information contained in this recommendation, but Kantilal Chhaganlal Securities or any of its subsidiaries or associates or employees shall not be in any way responsible for any loss or damage that may arise to any person from any inadvertent error in the information contained in this recommendation or any action taken on basis of this information. Technical analysis studies market psychology, price patterns and volume levels. It is used to forecast future price and market movements. Technical analysis is complementary to fundamental analysis and news sources. The recommendations issued herewith might be contrary to recommendations issued by Kantilal Chhaganlal Securities in the company research undertaken as the recommendations stated in this report is derived purely from technical analysis. Kantilal Chhaganlal Securities has based this document on information obtained from sources it believes to be reliable but which it has not independently verified; Kantilal Chhaganlal Securities makes no guarantee, representation or warranty and accepts no responsibility or liability as to its accuracy or completeness. The opinions contained within the report are based upon publicly available information at the time of publication and are subject to change without notice. The information and any disclosures provided herein are in summary form and have been prepared for informational purposes. The recommendations and suggested price levels are intended purely for trading purposes. The recommendations are valid for the day of the report however trading trends and volumes might vary substantially on an intraday basis and the recommendations may be subject to change. The information and any disclosures provided herein may be considered confidential. Any use, distribution, modification, copying, forwarding or disclosure by any person is strictly prohibited. The information and any disclosures provided herein do not constitute a solicitation or offer to purchase or sell any security or other financial product or instrument. The current performance may be unaudited. Past performance does not guarantee future returns. There can be no assurance that investments will achieve any targeted rates of return, and there is no guarantee against the loss of your entire investment. **POTENTIAL CONFLICT OF INTEREST DISCLOSURE (as on date of report)** Disclosure of interest statement – Analyst interest of the stock /Instrument(s): - No. Firm interest of the stock / Instrument (s): - No.