

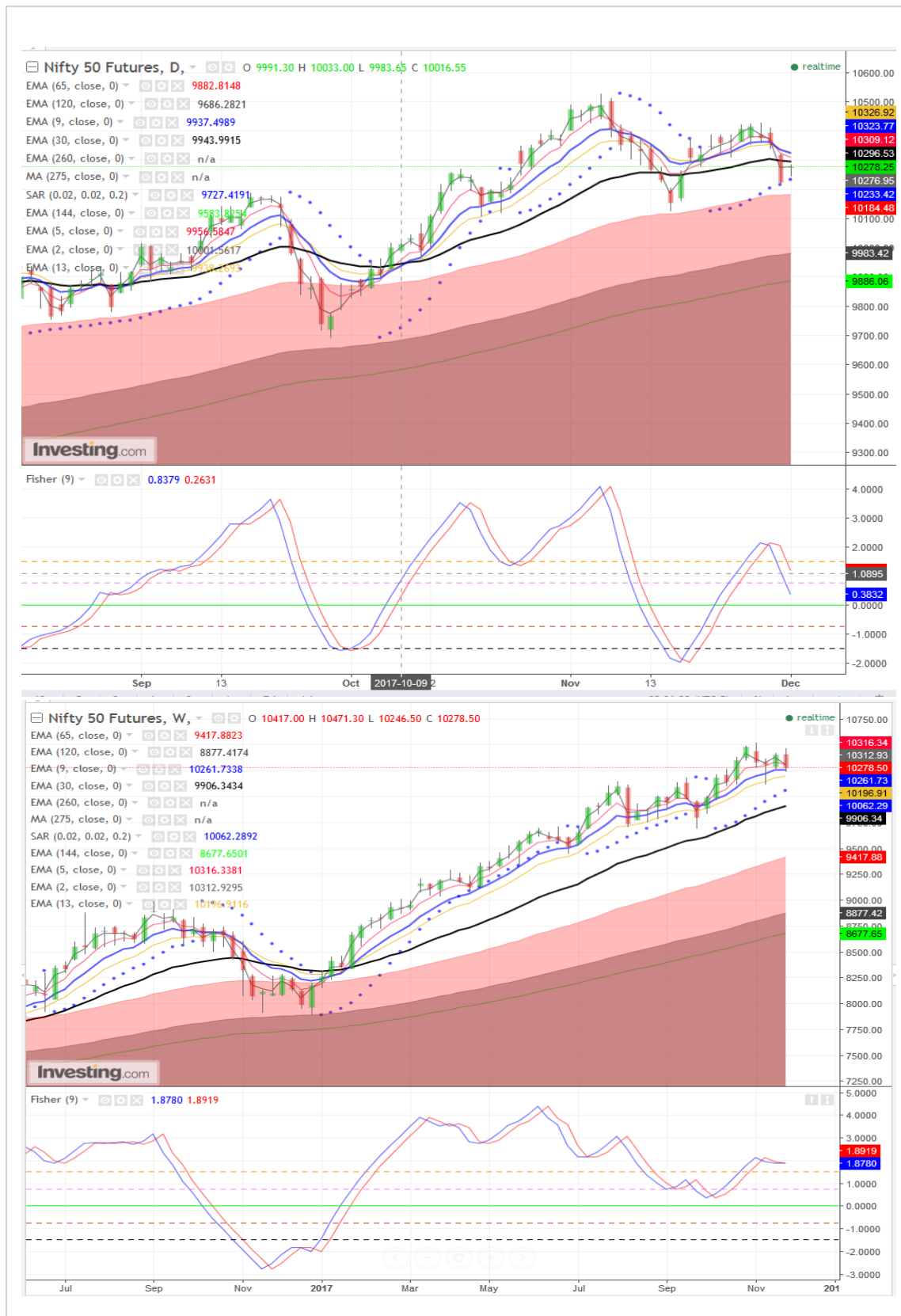
Indian Market

- **SGX NIFTY flat 0.02% /2 points at 10330 (at 9:10 IST)**
- The 2Q GDP data shows that 5 quarters' downtrend got arrested. But govt's spending took backseat while private spending improved, a big positive. Exports too expected to do well. However, given the rating action/review from top rating action are behind us, expect govt's to loose fiscal deficit target from 3.2% to 3.5% or slightly above. But containing the interest rate at current level would pose challenge.
- **Expect NIFTY to trade in sideways to mild positive. Positive triggers could come from Auto sales number and PMI which would see up momentum sustaining.**

Market background

- Asian stocks erased early gains and S&P 500 Index futures declined as the U.S. tax bill encountered stumbling blocks. Senate Republicans delayed voting on their tax bill as a setback forced them to patch up the plan only hours before a planned final vote Thursday night. Senators will rework the legislation through the evening with the next in a series of roll call votes set for 11 a.m. on Friday, Senate Majority Leader Mitch McConnell said. Republicans had previously hoped they could pass a plan by late Thursday or early Friday.
- NIKKEI 225 was flat to positive (+0.19%) so as ASX 200 +0.22%. HANG SENG flat but China-A50 dipped 0.83% and KOSPI 200 was flat to mild positive 0.13%. All US key indices futures were trading mild negative (upto -0.25%)
- US stocks rallied on Thursday as the possibility of the Senate passing a bill aimed at overhauling the U.S. tax code increased. The Dow Jones industrial average surged 331.67 points to close above 24,000 for the first time, The S&P 500 advanced 0.8 percent to close at 2,647.58 – an all-time high – with industrials and information technology among the best-performing sectors. The Nasdaq composite rose 0.7 percent to close at 6,873.97, rebounding from a 2 percent decline in the previous session.
- US Treasury yields rise to highest level in a month after McCain signals tax reform support
- OPEC and non-OPEC producers led by Russia on Thursday agreed to maintain the output cut until the end of 2018, while also signalling a possible early exit from the deal if the market overheats. U.S. oil held steady on Friday after OPEC and other major producers agreed to extend production curbs. WTI gained 0.4% at \$57.63 per barrel. Brent crude future was also trending up 0.51% at \$62.95 per barrel.

SGX Nifty: Daily and Weekly Chart



Pivot Table: Bank Nifty, Nifty & its constituents Futures (Week: 27 Nov-01 Dec 2017)

S3	S2	S1	Scrp	CMO 15	CMO 5	Lot Size	Wkly Chg	ST Trend	Pivot	R1	R2	R3
10318.0	10342.1	10375.7	NIFTY	36.4	42.5	75	100.5	+ve	10399.9	10433.5	10457.6	10491.2
25664.2	25717.1	25779.8	BANKNIFTY	32.5	84.4	40	23.7	+ve	25832.7	25895.4	25948.3	26011.0
398.1	400.6	403.1	ADANI PORTS	10.6	4.2	2500	3.0	-ve	405.5	408.0	410.5	413.0
261.2	263.2	264.5	AMBUJACEM	1.2	-24.4	2500	-9.4	-ve	266.5	267.8	269.8	271.1
1142.4	1147.4	1155.4	ASIANPAINT	5.1	-35.3	600	-12.1	-ve	1160.3	1168.3	1173.3	1181.3
680.2	688.1	702.2	AUROPHARMA	2.6	-30.7	800	7.5	+ve	710.1	724.2	732.1	746.2
535.3	538.6	542.4	AXISBANK	20.8	93.4	1200	1.8	-ve	545.6	549.4	552.7	556.5
3245.4	3268.9	3283.9	BAJAJ-AUTO	55.4	26.7	250	77.3	+ve	3307.5	3322.5	3346.0	3361.0
1739.8	1753.6	1771.9	BAJFINANCE	13.6	-33.0	500	-5.2	+ve	1785.7	1803.9	1817.7	1836.0
489.0	492.5	495.3	BHARTIARTL	29.4	19.3	1700	2.7	+ve	498.8	501.6	505.1	507.9
18615.3	18715.1	18864.8	BOSCHLTD	-52.5	-100.0	25	-38.8	-ve	18964.6	19114.3	19214.1	19363.8
496.7	499.6	504.6	BPCL	10.4	3.1	1800	5.4	+ve	507.4	512.4	515.3	520.3
602.0	608.0	612.0	CIPLA	38.4	9.3	1000	5.9	+ve	618.0	622.0	628.0	632.0
265.4	267.2	269.3	COALINDIA	37.2	-78.2	1700	-0.9	-ve	271.1	273.2	275.0	277.1
2191.1	2240.6	2270.1	DRREDDY	27.9	-42.0	200	-31.9	-ve	2319.6	2349.1	2398.6	2428.1
30105.3	30352.4	30595.8	EICHERMOT	14.1	-33.5	25	55.7	+ve	30842.9	31086.4	31333.5	31576.9
455.1	458.4	464.1	GAIL	52.4	45.2	2000	24.4	+ve	467.4	473.1	476.4	482.1
846.8	851.4	855.2	HCLTECH	-6.3	-48.6	700	15.0	-ve	859.9	863.7	868.3	872.1
1687.5	1694.3	1704.4	HDFC	4.1	-17.7	500	3.9	+ve	1711.1	1721.2	1728.0	1738.1
1825.6	1833.8	1845.6	HDFCBANK	31.9	12.2	500	25.1	+ve	1853.8	1865.6	1873.8	1885.6
3566.1	3596.2	3628.9	HEROMOTOCO	-15.8	-21.7	200	14.8	+ve	3659.0	3691.7	3721.8	3754.5
245.6	248.6	250.5	HINDALCO	27.5	-100.0	3500	-7.7	-ve	253.5	255.4	258.4	260.3
409.9	415.5	423.3	HINDPETRO	0.4	-50.5	1575	14.3	+ve	428.9	436.7	442.3	450.1
1242.5	1249.8	1259.8	HINDUNILVR	29.6	11.8	600	-10.7	-ve	1267.1	1277.1	1284.4	1294.4
1136.4	1147.2	1160.4	IBULHSGFIN	3.3	-99.8	400	-14.2	-ve	1171.2	1184.4	1195.2	1208.4
311.5	314.1	316.1	ICICIBANK	22.7	78.7	2750	-8.2	-ve	318.8	320.8	323.4	325.4
1621.1	1634.8	1653.5	INDUSINDBK	9.0	-11.6	300	38.6	+ve	1667.1	1685.8	1699.5	1718.2
372.2	374.6	378.2	INFRATEL	-1.2	-80.2	1700	0.1	-ve	380.6	384.2	386.6	390.2
966.1	978.8	993.8	INFY	7.3	100.0	500	36.7	+ve	1006.5	1021.6	1034.3	1049.3
388.1	390.4	393.3	IOC	-12.3	-54.0	1500	0.3	+ve	395.6	398.5	400.8	403.7
255.2	256.7	258.8	ITC	-17.6	-59.9	2400	2.6	+ve	260.2	262.3	263.8	265.9
1007.4	1014.7	1024.3	KOTAKBANK	13.6	-35.9	800	8.3	+ve	1031.6	1041.1	1048.4	1058.0
1204.1	1209.7	1214.2	LT	23.9	45.6	750	-6.7	-ve	1219.8	1224.3	1229.9	1234.4
821.3	825.7	828.5	LUPIN	-22.3	-69.9	400	-2.0	+ve	832.9	835.7	840.1	842.9
1404.5	1413.0	1424.3	M&M	19.9	37.6	500	13.1	+ve	1432.9	1444.2	1452.7	1464.0
8415.6	8448.8	8480.3	MARUTI	56.1	90.0	75	161.6	+ve	8513.4	8544.9	8578.1	8609.6
177.4	178.4	179.6	NTPC	26.2	33.1	4000	3.3	+ve	180.6	181.9	182.9	184.1
179.2	180.0	180.7	ONGC	33.2	24.6	3750	3.1	-ve	181.6	182.3	183.1	183.8
205.3	206.6	208.8	POWERGRID	-21.1	4.1	4000	2.3	+ve	210.2	212.4	213.7	215.9
936.1	941.9	947.2	RELIANCE	40.8	26.0	1000	39.5	+ve	953.0	958.3	964.1	969.4
326.1	329.3	331.3	SBIN	34.9	89.5	3000	-5.4	-ve	334.5	336.5	339.7	341.7
520.2	526.9	538.5	SUNPHARMA	41.1	17.0	800	31.0	+ve	545.3	556.9	563.6	575.2
417.1	421.1	423.5	TATAMOTORS	33.3	-1.2	1500	2.5	+ve	427.5	429.9	433.9	436.3
694.4	699.1	703.8	TATASTEEL	46.6	3.2	1000	6.9	+ve	708.5	713.2	717.9	722.6
2650.3	2665.2	2681.0	TCS	39.5	71.0	250	-23.1	-ve	2695.9	2711.7	2726.6	2742.4
481.8	486.3	490.8	TECHM	53.3	46.9	1100	8.4	+ve	495.2	499.7	504.2	508.7
4147.0	4169.1	4204.9	ULTRACEMCO	18.4	27.6	200	-40.8	-ve	4227.0	4262.8	4284.9	4320.7
299.2	302.2	304.5	VEDL	18.3	-44.4	1750	-1.4	-ve	307.5	309.8	312.8	315.1
289.0	290.1	291.6	WIPRO	3.3	2.9	2400	-2.2	-ve	292.7	294.2	295.3	296.8
307.8	310.2	311.6	YESBANK	-20.6	-46.5	1750	5.7	+ve	314.0	315.4	317.8	319.2
728.2	735.8	740.7	UPL	-20.4	-26.7	1200	19.1	+ve	748.4	753.3	760.9	765.8
544.3	550.8	558.1	ZEEL	31.9	81.8	1300	28.5	+ve	564.6	571.9	578.4	585.7

Contact Person Detail

SURYA NARAYAN NAYAK
HEAD - Research & Sales
Email - surya.nayak@kcsecurities.com
Contact No - +9122 - 67236089

Kantilal Chhaganlal Securities Pvt Ltd
Vilco Center, 'A' Wing, Near Garware House, 8,
Subhash Road, Ville Parle (E), Mumbai 400 057 Tel
No: +91 022-6723 6000/6001 Fax: +91 22 6723 6088

Disclaimer

This is solely for information of clients of Kantilal Chhaganlal Securities and does not construe to be an investment advice. It is also not intended as an offer or solicitation for the purchase and sale of any financial instruments. Any action taken by you on the basis of the information contained herein is your responsibility alone and Kantilal Chhaganlal Securities its subsidiaries or its employees or associates will not be liable in any manner for the consequences of such action taken by you. We have exercised due diligence in checking the correctness and authenticity of the information contained in this recommendation, but Kantilal Chhaganlal Securities or any of its subsidiaries or associates or employees shall not be in any way responsible for any loss or damage that may arise to any person from any inadvertent error in the information contained in this recommendation or any action taken on basis of this information. Technical analysis studies market psychology, price patterns and volume levels. It is used to forecast future price and market movements. Technical analysis is complementary to fundamental analysis and news sources. The recommendations issued herewith might be contrary to recommendations issued by Kantilal Chhaganlal Securities in the company research undertaken as the recommendations stated in this report is derived purely from technical analysis. Kantilal Chhaganlal Securities has based this document on information obtained from sources it believes to be reliable but which it has not independently verified; Kantilal Chhaganlal Securities makes no guarantee, representation or warranty and accepts no responsibility or liability as to its accuracy or completeness. The opinions contained within the report are based upon publicly available information at the time of publication and are subject to change without notice. The information and any disclosures provided herein are in summary form and have been prepared for informational purposes. The recommendations and suggested price levels are intended purely for trading purposes. The recommendations are valid for the day of the report however trading trends and volumes might vary substantially on an intraday basis and the recommendations may be subject to change. The information and any disclosures provided herein may be considered confidential. Any use, distribution, modification, copying, forwarding or disclosure by any person is strictly prohibited. The information and any disclosures provided herein do not constitute a solicitation or offer to purchase or sell any security or other financial product or instrument. The current performance may be unaudited. Past performance does not guarantee future returns. There can be no assurance that investments will achieve any targeted rates of return, and there is no guarantee against the loss of your entire investment. **POTENTIAL CONFLICT OF INTEREST DISCLOSURE (as on date of report)** Disclosure of interest statement – Analyst interest of the stock /Instrument(s): - No. Firm interest of the stock / Instrument (s): - No.